

# TIPE AA COMPUTERIZED LABORATORIUM BAHASA



## MASTER SIDE

### MASTER KONTROL

Pengendali utama sistem Lab Bahasa yang berbasis software komputer. Bisa dilengkapi dengan sistem touchscreen (optional).

MGLab



### SYSTEM CONTROL

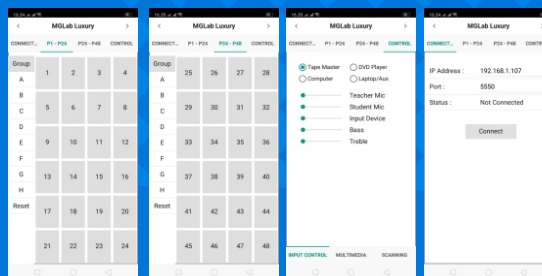
Micro Control System with internal memory, RS 232 Control  
Digital Circuit Operating Voltage 5 VDC +/-3% TTL Level  
Data Speed 19200 Kbps  
High Power Amplifier  
Tone Control DC Voltage  
Pre Amplifier DC Voltage



Output Headset Earphone: 8-16Ω Output Room Speaker : 8Ω  
Power Supply : 220/240V - 50Hz  
Power Consumption : 300-400 Watt  
Input : Headset 30-60Ω Master Tape, Computer, DVD, Audio Recorder, Auxiliary  
Frequency Response : 100-10000 Hz S/N Ratio 50 dB

Maximum absolute ratings

1. Operating Voltage 24 VDC (Audio Circuit)  
6 VDC (Digital Circuit)
2. Operating Temperature 85°C
3. Stand by temperature 30°C



### SOFTWARE CONTROL

1. Listening function
2. Intercom function
3. Writing function with keyboard control (optional)
4. Conversation
5. Video Repeater
6. Recording audio format mp3
7. Visualized Attender names and layout
8. Preprogrammable Seat Layout
9. User Friendly Graphical User Interface
10. Databased class, teacher, student as user entries
11. Evaluator Quiz (optional)
12. Keyboard Control
13. Inzo Features
14. Group Selector
15. Autorun with Adjustable Delay
16. Integrated on Android Device

### COMPUTER MASTER

Processor Intel® Core™ i5  
Memory 8GB DDR4  
Storage 512 GB SSD  
Monitor 21.5 inch  
Windows 11 Home  
DVDRW  
Keyboard + Mouse

Acer



### HEADSET TEACHER

MGLab MG 888MV

Mic

Type : Condenser  
Freq Response : 30 - 16.000 Hz  
Impedance : 32Ω, Sensitivity : -58+/- -3dB

Earphone

Freq Response : 20 - 16.000 Hz  
Impedance : 32Ω, Sensitivity : 105 dB/mW, Cable lenght : 1,5 m  
Connector/plug : 3 pin



### MIC WIRELESS

Shure / Sejenis

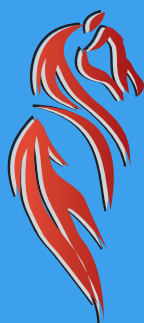
Frequency Stabilization : <±30  
Dynamic Range : >80dB  
Total Harmonic Distortion : >0.5%  
Frequency Response : 40Hz - 18KHz ±3dB  
Signal-to-Noise Ratio : ≥ 100dB  
Signal/Noise Ratio : >82dB



### UPS 700 VA

Capacity 700 VA;  
360 watt;  
50/60Hz +/- 1 Hz;

APC



# ARION INDONESIA

www.arionindonesia.co.id  
Jl. Lodan 129 Malang  
info@arionindonesia.id



### MEJA MASTER

MGLab

Bahan : Particle Board 15mm dengan laminasi PVC Sheet warna Beach model U / Standart  
Barang Buatan pabrik (knock down system)  
Ukuran model U : 210 x 120 x 75 cm  
Ukuran model Standart : 180 x 80 x 75 cm



### MEJA SISWA (TWINBOOTH)

MGLab

Model Twin Booth  
Bahan: Particle Board 15mm dengan laminasi PVC Sheet warna Beech dengan kaca & nomor siswa di bagian depan  
Ukuran: 123 x 118 x 54 cm  
Barang buatan pabrik (Knock Down System)



### LCD PROJECTOR 3600 Lumens

+ Wall Screen + pasang

Benq / Epson

Sistem Projector : DLP Technology  
Resolusi Native : SVGA (800 x 600)  
Brightness : 3600 Lumens  
Rasio Kontras : 20,000:1  
Rasio Aspek : 4:3  
Rasio Besar (Zoom) : 1.1:1  
Tipe Lampu : 200W  
Kesesuaian Video : NTSC, PAL, SECAM  
Daya / Power : AC100 to 240V, 50/60Hz  
Dimensi (WxHxD)(mm): 296 x 120 x 221

### KURSI MASTER

MGLab



Kursi dapat diputar, mempunyai sandaran lengan, tinggi dapat diatur.



### HEADSET SISWA

MGLab MG 888 MV

Mic

Type : Condenser  
Freq Response : 30 - 16.000 Hz  
Impedance : 32Ω  
Sensitively : -58 +/- - 3dB

Earphone

Freq Response : 20 - 16.000 Hz  
Impedance : 32Ω  
Sensitively : 1053m  
Cable lenght : 1,5 m  
Connector/plug : 3 pin



### KARPET + PEMASANGAN

Jawa

Bahan terbuat dari serabut plastik, tebal 4mm Polypropylene, Lebar 4 meter dan panjang mengikuti ukuran ruangan lab & dilapisi karpet

## STUDENT SIDE

### STUDENT CONSOLE

MGLab



MG LAB (Student Console)  
Minimal memiliki fungsi utama sebagai berikut :  
\* Menggunakan lampu LED  
\* Record Out  
\* Fungsi memanggil/Call; siswa tinggal menekan tombol "Call" untuk menghubungi guru.

#### Spesifikasi

Frequency Response : 63-10.000Hz  
S/N Ratio : > 50dB  
Distortion : < 3%  
Input Mic : - 60 dB  
Intercom : - 15 dB, 5000  
Headset : - 10 dB



MGLab

### INSTALASI KABEL AUDIO dan POWER

Kabel : LAN  
Connector : Rj45, Kabel RCA, Kabel Listrik

## KONEKSI

### BOX STAGE MASTER dan BOX STAGE KABEL

MGLab

Box Stage Master bahan multiplex dilapisi karpet, ukuran 240x180x20 cm  
Box Stage Kabel bahan multiplex dilapisi karpet, ukuran 240x60x12 cm



## KELENGKAPAN RUANGAN

### STUDENT CHAIR

Fortuner



Bahan stainless steel, jenis lipat (Folding Chair)  
Tinggi : 810 mm  
Lebar : 375 mm  
Panjang : 395 mm

### ROOM SPEAKER

MGLab

Speaker Size : 8 inch (Three Way)  
Power : 20.000 PMPO



## OPTIONAL

### EVALUATOR QUIZ

with Keyboard and LCD Display



Proses Instalasi sederhana, Dongle security, Klien Up to 50 channel, Kompatible dengan tipe Lab Bahasa Digital apapun, LCD Display, Keyboard PS2/Keypad Numerik, Registrasi acak di klien manapun, 5 tombol digital quiz, Aplikasi Software mudah dan familiar (standart office), Support Double Exam, Support import/export data to excel, Modem wavcomm for SMS, Tampilan Grafik report, Tampilan Nilai Mean, Median dan Modus, Detail history jawaban, Auto SMS report to client  
Manual SMS to client, Pembuatan soal bisa dilakukan di Ms. Word

# TIPE AAC COMPUTERIZED LABORATORIUM BAHASA



## MASTER SIDE

### MASTER KONTROL

Pengendali utama sistem Lab Bahasa yang berbasis software komputer. Bisa dilengkapi dengan sistem touchscreen (optional).

MGLab



### SYSTEM CONTROL

Micro Control System with internal memory, RS 232 Control  
Digital Circuit Operating Voltage 5 VDC +/-3% TTL Level  
Data Speed 19200 Kbps  
High Power Amplifier  
Tone Control DC Voltage  
Pre Amplifier DC Voltage

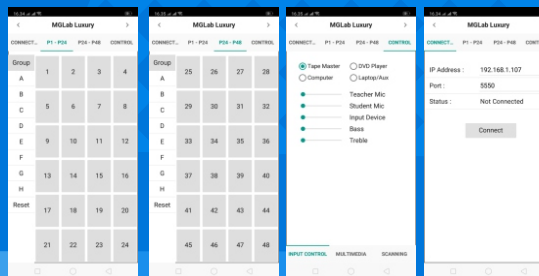


Output Headset Earphone: 8-16Ω Output Room Speaker : 8Ω  
Power Supply : 220/240V - 50Hz  
Power Consumption : 300-400 Watt  
Input : Headset 30-60Ω Master Tape, Computer, DVD, Audio Recorder, Auxiliary

Frequency Response : 100-10000 Hz S/N Ratio 50 dB

Maximum absolute ratings

- Operating Voltage 24 VDC (Audio Circuit)  
6 VDC (Digital Circuit)
- Operating Temperature 85°C
- Stand by temperature 30°C



### SOFTWARE CONTROL

- Listening function
- Intercom function
- Writing function with keyboard control (optional)
- Conversation
- Video Repeater
- Recording audio format mp3
- Visualized Attender names and layout
- Preprogrammable Seat Layout
- User Friendly Graphical User Interface
- Databased class, teacher, student as user entries
- Evaluator Quiz (optional)
- Keyboard Control
- Inzo Features
- Group Selector
- Autorun with Adjustable Delay
- Integrated on Android Device

### KOMPUTER MASTER

Processor Intel® Core™ i5  
Memory 8GB DDR4  
Storage 512 GB SSD  
Monitor 21.5 inch  
Windows 11 Home  
DVDRW  
Keyboard + Mouse

Acer



### HEADSET TEACHER

Mic

MGLab MG 888MV

Type : Condenser  
Freq Response : 30 - 16.000 Hz  
Impedence : 32Ω, Sensitivity : -58+/- -3dB

Earphone

Freq Response : 20 - 16.000 Hz  
Impedance : 32Ω, Sensitivity : 105 dB/mW, Cable lenght : 1,5 m  
Connector/plug : 3 pin



### MIC WIRELESS

Shure / sejenis

Frequency Stabilization : <±30  
Dynamic Range : >80dB  
Total Harmonic Distortion : >0.5%  
Frequency Response : 40Hz - 18KHz ±3dB  
Signal-to-Noise Ratio : ≥ 100dB  
Signal/Noise Ratio : >82dB



### UPS 700 VA

Capacity 700 VA;  
360 watt;  
50/60Hz +/- 1 Hz;

APC



### MEJA MASTER

Bahan : Particle Board 15mm dengan laminasi PVC Sheet warna Beach model U / Standart  
Barang Buatan pabrik (knock down system)  
Ukuran model U : 210 x 120 x 75 cm  
Ukuran model Standart : 180 x 80 x 75 cm

MGLab



# ARION INDONESIA

[www.arionindonesia.co.id](http://www.arionindonesia.co.id)  
Jl. Lodan 129 Malang  
[info@arionindonesia.id](mailto:info@arionindonesia.id)

## KURSI MASTER

MGLab



Kursi dapat diputar, mempunyai sandaran lengan, tinggi dapat diatur.

## MEJA SISWA (TWINBOOTH)

MGLab

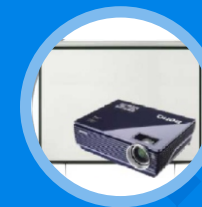


Model Twin Booth  
Bahan: Particle Board 15mm dengan laminasi PVC Sheet warna Beech dengan kaca & nomor siswa di bagian depan  
Ukuran: 123 x 118 x 54 cm  
Barang buatan pabrik (Knock Down System)

## LCD PROJECTOR 3600 Lumens

+ Wall Screen + pasang

Benq / Epson



Sistem Projector : DLP Technology  
Resolusi Native : SVGA (800 x 600)  
Brightness : 3600 Lumens  
Rasio Kontras : 20,000:1  
Rasio Aspek : 4:3  
Rasio Besaran (Zoom) : 1.1:1  
Tipe Lampu : 200W  
Kesesuaian Video : NTSC, PAL, SECAM  
Daya / Power : AC100 to 240V, 50/60Hz  
Dimensi (WxHxD)(mm): 296 x 120 x 221

## AUDIO RECORDER

MGLab



Support MP3, WMA, WAV; Support USB/SD memory; Recorder rate: highest bit rate for 192 Kbps, WAV format; LCD display, support multilateral languages, enter subdirectory, scan folders, display lyricsLine in record, the external audio source can be recorded into the SD card or U disk; Connect computer: USB sound card; Additional functions: calendar, clock, alarm clock, can by USB cable connect to computer to download SD card; IR remote control; Support Multilanguage, reach to 24 countries

## HEADSET SISWA

MGLab MG 888MV



Mic  
Type : Condenser  
Freq Response : 30 - 16.000 Hz  
Impedance : 32Ω  
Sensitively : -58 +/- - 3dB  
Earphone  
Freq Response : 20 - 16.000 Hz  
Impedance : 32Ω  
Sensitively : 1053m  
Cable lenght : 1,5 m  
Connector/plug : 3 pin

## KARPET + PEMASANGAN

Jawa



Bahan terbuat dari serabut plastik, tebal 4mm Polypropylene, Lebar 4 meter dan panjang mengikuti ukuran ruangan lab & dilapisi karpet

# STUDENT SIDE

MGLab



## BOX STAGE MASTER dan BOX STAGE KABEL

Box Stage Master bahan multiplex dilapisi karpet, ukuran 240x180x20 cm  
Box Stage Kabel bahan multiplex dilapisi karpet, ukuran 240x60x12 cm

## STUDENT CONSOLE

MGLab



MG LAB (Student Console)  
Minimal memiliki fungsi utama sebagai berikut :  
\* Menggunakan lampu LED  
\* Record Out  
\* Fungsi memanggil/Call; siswa tinggal menekan tombol "Call" untuk menghubungi guru.

### Spesifikasi

Frequency Response : 63-10.000Hz  
S/N Ratio : > 50dB  
Distortion : < 3%  
Input Mic : - 60 dB  
Intercom : - 15 dB, 5000  
Headset : - 10 dB

## STUDENT CHAIR

Fortuner



Bahan stainless steel, jenis lipat (Folding Chair)  
Tinggi : 810 mm  
Lebar : 375 mm,  
Panjang : 395 mm

# KELENGKAPAN

## INSTALASI KABEL AUDIO dan POWER

MGLab



Kabel : LAN  
Connector : Rj45, Kabel RCA, Kabel Listrik

## ROOM SPEAKER

MGLab



Speaker Size : 8 inch (Three Way)  
Power : 20.000 PMPO

## OPTIONAL

### EVALUATOR QUIZ

with Keyboard and LCD Display



Proses Instalasi sederhana, Dongle security, Klien Up to 50 channel, Kompatible dengan tipe Lab Bahasa Digital apapun, LCD Display, Keyboard PS2/Keypad Numerik, Registrasi acak di klien manapun, 5 tombol digital quiz, Aplikasi Software mudah dan familiar (standart office), Support Double Exam, Support import/export data to excel, Modem wavecomm for SMS, Tampilan Grafik report, Tampilan Nilai Mean, Median dan Modus, Detail history jawaban, Auto SMS report to client  
Manual SMS to client, Pembuatan soal bisa dilakukan di Ms. Word

# TIPE AAC FLEX COMPUTERIZED LABORATORIUM BAHASA



## MASTER SIDE

### MASTER KONTROL

Pengendali utama sistem Lab Bahasa yang berbasis software komputer  
Bisa dilengkapi dengan sistem touchscreen (optional)

MGLab



### SYSTEM CONTROL

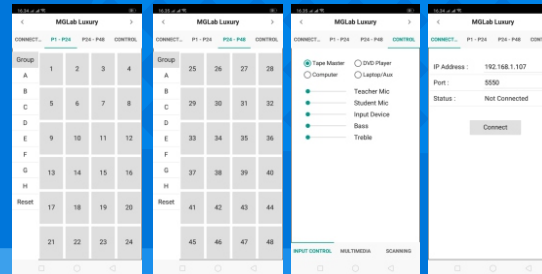
Micro Control System with internal memory, RS 232 Control  
Digital Circuit Operating Voltage  
5 VDC +/-3% TTL Level  
Data Speed 19200 Kbps  
High Power Amplifier  
Tone Control DC Voltage  
Pre Amplifier DC Voltage



Output Headset Earphone: 8-16Ω Output Room Speaker : 8Ω  
Power Supply : 220/240V - 50Hz  
Power Consumption : 300-400 Watt  
Input : Headset 30-60Ω Master Tape, Computer, DVD, Audio Recorder, Auxiliary  
Frequency Response : 100-10000 Hz S/N Ratio 50 dB

Maximum absolute ratings

1. Operating Voltage 24 VDC (Audio Circuit)  
6 VDC (Digital Circuit)
2. Operating Temperature 85°C
3. Stand by temperature 30°C



### SOFTWARE CONTROL

1. Listening function
2. Intercom function
3. Writing function with keyboard control (optional)
4. Conversation
5. Video Repeater
6. Recording audio format mp3
7. Visualized Attender names and layout
8. Preprogrammable Seat Layout
9. User Friendly Graphical User Interface
10. Databased class, teacher, student as user entries
11. Evaluator Quiz (optional)
12. Keyboard Control
13. Inzo Features
14. Group Selector
15. Autorun with Adjustable Delay
16. Integrated on Android Device

### KOMPUTER MASTER

Acer

Processor Intel® Core™ i5  
Memory 8GB DDR4  
Storage 512 GB SSD  
Monitor 21.5 inch  
Windows 11 Home  
DVD/CD  
Keyboard + Mouse



### HEADSET TEACHER

MGLab MG 888MV

**Mic**

Type : Condenser  
Freq Response : 30 - 16.000 Hz  
Impedance : 32Ω, Sensitivity : -58+/- -3dB  
**Earphone**

Freq Response : 20 - 16.000 Hz  
Impedance : 32Ω, Sensitivity : 105 dB/mW, Cable length : 1,5 m  
Connector/plug : 3 pin



### MIC WIRELESS

Shure / sejenis

Frequency Stabilization : <±30  
Dynamic Range : >80dB  
Total Harmonic Distortion : >0.5%  
Frequency Response : 40Hz - 18KHz ±3dB  
Signal-to-Noise Ratio : ≥ 100dB  
Signal/Noise Ratio : >82dB



### UPS 700 VA

APC

Capacity 700 VA;  
360 watt;  
50/60Hz +/- 1 Hz;



### MEJA MASTER

MGLab

Bahan : Particle Board 15mm dengan laminasi PVC Sheet warna Beach model U / Standart  
Barang Buatan pabrik (knock down system)  
Ukuran model U : 210 x 120 x 75 cm  
Ukuran model Standart : 180 x 80 x 75 cm



# ARION INDONESIA

[www.arionindonesia.co.id](http://www.arionindonesia.co.id)  
Jl. Lodan 129 Malang  
[info@arionindonesia.id](mailto:info@arionindonesia.id)

## KURSI MASTER

Kursi dapat diputar, mempunyai sandaran lengan, tinggi dapat diatur.

MGLab



## AUDIO RECORDER

MGLab

Support MP3, WMA, WAV; Support USB/SD memory; Recorder rate: highest bit rate for 192 Kbps, WAV format; LCD display, support multilateral languages, enter subdirectory, scan folders, display lyricsLine in record, the external audio source can be recorded into the SD card or U disk; Connect computer: USB sound card; Additional functions: calendar, clock, alarm clock, can by USB cable connect to computer to download SD card; IR remote control; Support Multilanguage, reach to 24 countries

## DOCUMENT CAMERA

Avervision

Document Camera, 16X total zoom (2X AVerZoom™ + 8X digital zoom), HDMI Output, 5M Pixel, Resolution Full HD1080p (1920 x 1080)

## MEJA SISWA (TWINBOOTH)

MGLab



Model Twin Booth  
Bahan: Particle Board 15mm dengan laminasi PVC Sheet warna Beech dengan kaca & nomor siswa di bagian depan  
Ukuran: 123 x 118 x 54 cm  
Barang buatan pabrik (Knock Down System)

## HEADSET SISWA

MGLab MG 888MV

Mic

Type : Condenser  
Freq Response : 30 - 16.000 Hz  
Impedance : 32Ω  
Sensitively : -58 +/- - 3dB

Earphone

Freq Response : 20 - 16.000 Hz  
Impedance : 32Ω  
Sensitively : 1053m  
Cable lenght : 1,5 m  
Connector/plug : 3 pin

## AUDIO RECORDER

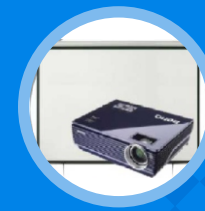
MGLab

Support MP3, WMA, WAV; Support USB/SD memory; Recorder rate: highest bit rate for 192 Kbps, WAV format; LCD display, support multilateral languages, enter subdirectory, scan folders, display lyricsLine in record, the external audio source can be recorded into the SD card or U disk; Connect computer: USB sound card; Additional functions: calendar, clock, alarm clock, can by USB cable connect to computer to download SD card; IR remote control; Support Multilanguage, reach to 24 countries

## LCD PROJECTOR 3600 Lumens

+ Wall Screen + pasang

Benq / Epson



Sistem Projector : DLP Technology  
Resolusi Native : SVGA (800 x 600)  
Brightness : 3600 Lumens  
Rasio Kontras : 20,000:1  
Rasio Aspek : 4:3  
Rasio Besaran (Zoom) : 1.1:1  
Tipe Lampu : 200W  
Kesesuaian Video : NTSC, PAL, SECAM  
Daya / Power : AC100 to 240V, 50/60Hz  
Dimensi (WxHxD)(mm): 296 x 120 x 221

## KARPET + PEMASANGAN

Jawa



Bahan terbuat dari serabut plastik, tebal 4mm Polypropylene, Lebar 4 meter dan panjang mengikuti ukuran ruangan lab & dilapisi karpet

## BOX STAGE MASTER dan BOX STAGE KABEL

MGLab

Box Stage Master bahan multiplex dilapisi karpet, ukuran 240x180x20 cm  
Box Stage Kabel bahan multiplex dilapisi karpet, ukuran 240x60x12 cm

# STUDENT SIDE

## STUDENT CONSOLE

MGLab

MG LAB (Student Console)  
Minimal memiliki fungsi utama sebagai berikut :  
\* Menggunakan lampu LED  
\* Record Out  
\* Fungsi memanggil/Call; siswa tinggal menekan tombol "Call" untuk menghubungi guru.



### Spesifikasi

Frequency Response : 63-10.000Hz  
S/N Ratio : > 50dB  
Distortion : < 3%  
Input Mic : - 60 dB  
Intercom : - 15 dB, 5000  
Headset : - 10 dB

## STUDENT CHAIR

Fortuner

Bahan stainless steel, jenis lipat (Folding Chair)  
Tinggi : 810 mm  
Lebar : 375 mm,  
Panjang : 395 mm



# KELENGKAPAN

## INSTALASI KABEL AUDIO dan POWER

MGLab

Kabel : LAN  
Connector : Rj45, Kabel RCA, Kabel Listrik



## ROOM SPEAKER

MGLab

Speaker Size : 8 inch (Three Way)  
Power : 20.000 PMPO



## OPTIONAL

### EVALUATOR QUIZ

with Keyboard and LCD Display

Proses Instalasi sederhana, Dongle security, Klien Up to 50 channel, Kompatible dengan tipe Lab Bahasa Digital apapun, LCD Display, Keyboard PS2/Keypad Numerik, Registrasi acak di klien manapun, 5 tombol digital quiz, Aplikasi Software mudah dan familiar (standart office), Support Double Exam, Support import/export data to excel, Modem wavecomm for SMS, Tampilan Grafik report, Tampilan Nilai Mean, Median dan Modus, Detail history jawaban, Auto SMS report to client  
Manual SMS to client, Pembuatan soal bisa dilakukan di Ms. Word



# TIPE AAC FLEXPUS COMPUTERIZED LABORATORIUM BAHASA



## MASTER SIDE

### MASTER KONTROL

Pengendali utama sistem Lab Bahasa yang berbasis software komputer. Bisa dilengkapi dengan sistem touchscreen (optional).

MGLab



### SYSTEM CONTROL

Micro Control System with internal memory, RS 232 Control

Digital Circuit Operating Voltage

5 VDC +/-3% TTL Level

Data Speed 19200 Kbps

High Power Amplifier

Tone Control DC Voltage

Pre Amplifier DC Voltage

Output Headset Earphone: 8-16Ω Output Room Speaker : 8Ω

Power Supply : 220/240V - 50Hz

Power Consumption : 300-400 Watt

Input : Headset 30-60Ω Master Tape, Computer, DVD, Audio Recorder, Auxiliary

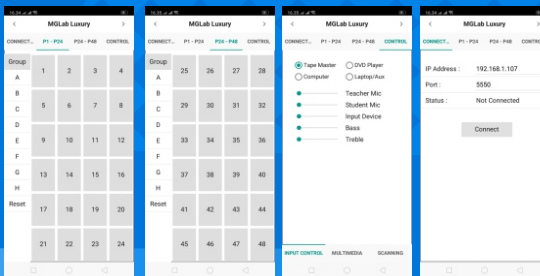
Frequency Response : 100-10000 Hz S/N Ratio 50 dB

Maximum absolute ratings

1. Operating Voltage 24 VDC (Audio Circuit)  
6 VDC (Digital Circuit)

2. Operating Temperature 85°C

3. Stand by temperature 30°C



### SOFTWARE CONTROL

1. Listening function
2. Intercom function
3. Writing function with keyboard control (optional)
4. Conversation
5. Video Repeater
6. Recording audio format mp3
7. Visualized Attender names and layout
8. Preprogrammable Seat Layout
9. User Friendly Graphical User Interface
10. Databased class, teacher, student as user entries
11. Evaluator Quiz (optional)
12. Keyboard Control
13. Inzo Features
14. Group Selector
15. Autorun with Adjustable Delay
16. Integrated on Android Device

### KOMPUTER MASTER

Acer

Processor Intel® Core™ i5  
Memory 8GB DDR4  
Storage 512 GB SSD  
Monitor 21.5 inch  
Windows 11 Home  
DVDRW  
Keyboard + Mouse



### HEADSET TEACHER

MGLab MG 888MV

Mic

Type : Condenser

Freq Response : 30 - 16.000 Hz

Impedance : 32Ω, Sensitivity : -58+/- -3dB

Earphone

Freq Response : 20 - 16.000 Hz

Impedance : 32Ω, Sensitivity : 105 dB/mW, Cable length : 1,5 m

Connector/plug : 3 pin



### MIC WIRELESS

Shure / sejenis

Frequency Stabilization : <±30

Dynamic Range : >80dB

Total Harmonic Distortion : >0.5%

Frequency Response : 40Hz - 18KHz ±3dB

Signal-to-Noise Ratio : ≥ 100dB

Signal/Noise Ratio : >82dB



### UPS 700 VA

APC

Capacity 700 VA;  
360 watt;  
50/60Hz +/- 1 Hz;



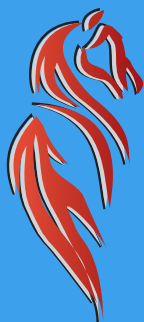
### MEJA MASTER

MGLab

Bahan : Particle Board 15mm dengan laminasi PVC Sheet warna Beach model U / Standart  
Barang Buatan pabrik (knock down system)

Ukuran model U : 210 x 120 x 75 cm

Ukuran model Standart : 180 x 80 x 75 cm



# ARION INDONESIA

www.arionindonesia.co.id  
Jl. Lodan 129 Malang  
info@arionindonesia.id

## KURSI MASTER

Kursi dapat diputar, mempunyai sandaran lengan, tinggi dapat diatur.

MGLab



## AUDIO RECORDER

MGLab

Support MP3, WMA, WAV; Support USB/SD memory; Recorder rate: highest bit rate for 192 Kbps, WAV format; LCD display, support multilateral languages, enter subdirectory, scan folders, display lyricsLine in record, the external audio source can be recorded into the SD card or U disk; Connect computer: USB sound card; Additional functions: calendar, clock, alarm clock, can by USB cable connect to computer to download SD card; IR remote control; Support Multilanguage, reach to 24 countries

## DOCUMENT CAMERA

Avervision

Document Camera, 16X total zoom (2X AVerZoom™ + 8X digital zoom), HDMI Output, 5M Pixel, Resolution Full HD1080p (1920 x 1080)



# STUDENT SIDE

## STUDENT CONSOLE

MG LAB (Student Console)  
Minimal memiliki fungsi utama sebagai berikut :  
\* Menggunakan lampu LED  
\* Record Out  
\* Fungsi memanggil/Call; siswa tinggal menekan tombol "Call" untuk menghubungi guru.

MGLab



### Spesifikasi

Frequency Response : 63-10.000Hz  
S/N Ratio : > 50dB  
Distortion : < 3%  
Input Mic : - 60 dB  
Intercom : - 15 dB, 5000  
Headset : - 10 dB

## STUDENT CHAIR

Bahan stainless steel, jenis lipat (Folding Chair)  
Tinggi : 810 mm  
Lebar : 375 mm,  
Panjang : 395 mm

Fortuner



## MEJA SISWA (TWINBOOTH) MGLab tanpa sekat

Model Twin Booth  
Bahan: Particle Board 15mm dengan laminasi PVC Sheet warna Beech dengan kaca & nomor siswa di bagian depan  
Ukuran: 123 x 118 x 54 cm  
Barang buatan pabrik (Knock Down System)



## HEADSET SISWA

MGLab MG 888MV

### Mic

Type : Condenser  
Freq Response : 30 - 16.000 Hz  
Impedance : 32Ω  
Sensitively : -58 +/- - 3dB

### Earphone

Freq Response : 20 - 16.000 Hz  
Impedance : 32Ω  
Sensitively : 1053m  
Cable lenght : 1,5 m  
Connector/plug : 3 pin



## AUDIO RECORDER

MGLab

Support MP3, WMA, WAV; Support USB/SD memory; Recorder rate: highest bit rate for 192 Kbps, WAV format; LCD display, support multilateral languages, enter subdirectory, scan folders, display lyricsLine in record, the external audio source can be recorded into the SD card or U disk; Connect computer: USB sound card; Additional functions: calendar, clock, alarm clock, can by USB cable connect to computer to download SD card; IR remote control; Support Multilanguage, reach to 24 countries



## Monitor LCD 21,5 inch

LG

(2 siswa 1 monitor) + instalasi

LCD Screen size 21,5",  
Aspect Ratio 16:9,  
Resolution 1920x1080



## Splitter HDMI+ Kabel HDMI 1 Set

Aten / Netline



# KELENGKAPAN

## INSTALASI KABEL AUDIO dan POWER

MGLab

Kabel : LAN  
Connector : Rj45, Kabel RCA, Kabel Listrik



## ROOM SPEAKER

Speaker Size : 8 inch (Three Way)  
Power : 20.000 PMPO

MGLab



## LCD PROJECTOR 3600 Lumens

+ Wall Screen + pasang

Benq / Epson

Sistem Projector : DLP Technology  
Resolusi Native : SVGA (800 x 600)  
Brightness : 3600 Lumens  
Rasio Kontras : 20,000:1

Rasio Besar (Zoom) : 1.1:1  
Tipe Lampu : 200W

Kesesuaian Video : NTSC, PAL, SECAM  
Daya / Power : AC100 to 240V, 50/60Hz  
Dimensi (WxHxD)(mm): 296 x 120 x 221

## KARPET + PEMASANGAN

Jawa

Bahan terbuat dari serabut plastik, tebal 4mm  
Polypropylene, Lebar 4 meter dan panjang mengikuti ukuran ruangan lab & dilapisi karpet



## BOX STAGE MASTER dan BOX STAGE KABEL

MGLab

Box Stage Master bahan multiplex dilapisi karpet, ukuran 240x180x20 cm  
Box Stage Kabel bahan multiplex dilapisi karpet, ukuran 240x60x12 cm



## OPTIONAL

## EVALUATOR QUIZ

with Keyboard and LCD Display

Proses Instalasi sederhana, Dongle security, Klien Up to 50 channel, Kompatible dengan tipe Lab Bahasa Digital apapun, LCD Display, Keyboard PS2/Keypad Numerik, Registrasi acak di klien manapun, 5 tombol digital quiz, Aplikasi Software mudah dan familiar (standart office), Support Double Exam, Support import/export data to excel, Modem wavecomm for SMS, Tampilan Grafik report, Tampilan Nilai Mean, Median dan Modus, Detail history jawaban, Auto SMS report to client  
Manual SMS to client, Pembuatan soal bisa dilakukan di Ms. Word





# TIPE LUX COMPUTERIZED LABORATORIUM BAHASA



## MASTER SIDE

### MASTER KONTROL

Pengendali utama sistem Lab Bahasa yang berbasis software komputer. Bisa dilengkapi dengan sistem touchscreen (optional)

MGLab



### SYSTEM CONTROL

Micro Control System with internal memory, RS 232 Control  
Digital Circuit Operating Voltage  
5 VDC +/-3% TTL Level  
Data Speed 19200 Kbps  
High Power Amplifier  
Tone Control DC Voltage  
Pre Amplifier DC Voltage

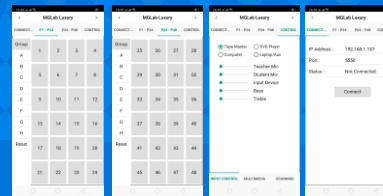


Output Headset Earphone: 8-16Ω Output Room Speaker : 8Ω  
Power Supply : 220/240V - 50Hz  
Power Consumption : 300-400 Watt  
Input : Headset 30-60Ω Master Tape, Computer, DVD, Audio Recorder, Auxiliary

Frequency Response : 100-10000 Hz S/N Ratio 50 dB

Maximum absolute ratings

1. Operating Voltage 24 VDC (Audio Circuit)  
6 VDC (Digital Circuit)
2. Operating Temperature 85°C
3. Stand by temperature 30°C



### SOFTWARE CONTROL

1. Listening function
2. Intercom function
3. Writing function with keyboard control (optional)
4. Conversation
5. Video Repeater
6. Recording audio format mp3
7. Visualized Attender names and layout
8. Preprogrammable Seat Layout
9. User Friendly Graphical User Interface
10. Databased class, teacher, student as user entries
11. Evaluator Quiz (optional)
12. Keyboard Control
13. Inzo Features
14. Group Selector
15. Autorun with Adjustable Delay
16. Integrated on Android Device

## KOMPUTER MASTER

Acer

Processor Intel® Core™ i5  
Memory 8GB DDR4  
Storage 512 GB SSD  
Monitor 21.5 inch  
Windows 11 Home  
DVDRW  
Keyboard + Mouse



## HEADSET TEACHER

MGLab MG 888MV

Mic

Type : Condenser  
Freq Response : 30 - 16.000 Hz  
Impedence : 32Ω, Sensitivity : -58+/- -3dB

Earphone

Freq Response : 20 - 16.000 Hz  
Impedence : 32Ω, Sensitivity : 105 dB/mW, Cable lenght : 1,5 m  
Connector/plug : 3 pin



## MIC WIRELESS

Shure / sejenis

Frequency Stabilization : <±30  
Dynamic Range : >80dB  
Total Harmonic Distortion : >0.5%  
Frequency Response : 40Hz - 18KHz ±3dB  
Signal-to-Noise Ratio : ≥ 100dB  
Signal/Noise Ratio : >82dB



## UPS 700 VA

APC



Capacity 700 VA;  
360 watt;  
50/60Hz +/- 1 Hz;

## MEJA MASTER

MGLab

Bahan : Particle Board 15mm dengan laminasi PVC Sheet warna Beach model U / Standart  
Barang Buatan pabrik (knock down system)  
Ukuran model U : 210 x 120 x 75 cm  
Ukuran model Standart : 180 x 80 x 75 cm



## CENTRAL CONTROL

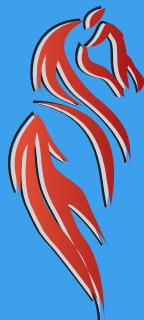
Media / Evert CMC

Power supply: AC: 200-240V

Signal interterface: Audio/video input & output  
VGA input (include laptop)  
VGA output  
3.5 stereo output

Power Control: Built-in projector power off protection  
Delay time can be modified  
Built-in electronic screen's power supply

Control method: Db9 standard learning interface  
Infrared RS 485 bilateral control



# ARION INDONESIA

www.arionindonesia.co.id  
Jl. Lodan 129 Malang  
info@arionindonesia.id

## KURSI MASTER

Kursi dapat diputar, mempunyai sandaran lengan, tinggi dapat diatur.

MGLab



## DOCUMENT CAMERA

Document Camera, 16X total zoom (2X AVerZoom™ + 8X digital zoom), HDMI Output, 5M Pixel, Resolution Full HD1080p (1920 x 1080)

Avervision



## AUDIO RECORDER

Support MP3, WMA, WAV; Support USB/SD memory; Recorder rate: highest bit rate for 192 Kbps, WAV format; LCD display, support multilateral languages, enter subdirectory, scan folders, display lyricsLine in record, the external audio source can be recorded into the SD card or U disk; Connect computer: USB sound card; Additional functions: calendar, clock, alarm clock, can by USB cable connect to computer to download SD card; IR remote control; Support Multilanguage, reach to 24 countries

MGLab



## MOUSE + PEN TABLET

- Genius - 8" x 6" working area, comfortable for easy drawing, painting and using the PC
- Cordless mouse and pen design gives you unlimited freedom
- 3D scroll wheel for fast browsing on the internet and in Windows documents
- Make handwriting notes/drawings on the internet & any application program
- 1024-level pressure sensitivity for all kinds of shapes and thickness control



# STUDENT SIDE

## STUDENT CONSOLE

MG LAB ( Student Console) Minimal memiliki fungsi utama sebagai berikut:  
\* Menggunakan lampu LED  
\* Record Out  
\* Fungsi memanggil/Call; siswa tinggal menekan tombol "Call" untuk menghubungi guru

MGLab



### Spesifikasi

Frequency Response : 63 - 10.000 Hz  
S/N Ratio : > 50 dB  
Distortion : < 3%  
Input Mic : - 60 dB  
Intercom : - 15 dB, 5000  
Headset : - 10 dB

## STUDENT CHAIR

Fortuner

Bahan stainless steel,  
Tinggi: 810 mm,  
Lebar: 375 mm  
Panjang: 395 mm  
jenis lipat (Folding Chair)



## MEJA SISWA (TWINBOOTH)

MGLab



Model Twin Booth  
Bahan: Particle Board 15 mm dengan laminasi PVC Sheet warna Beech dengan kaca & nomor siswa di bagian depan  
Ukuran: 123 x 118 x 54 cm  
Barang buatan pabrik (Knock Down System)

## HEADSET SISWA

Mic

MGLab MG 888MV

Type : Condenser

Freq Response : 30 - 16.000 Hz

Impedence : 32Ω

Sensitively : -58+/- -3dB

Earphone

Freq Response : 20 - 16.000 Hz

Impedance : 32Ω

Sensitively : 105 dB/mW

Cable lenght : 1,5 m

Connector/plug : 3 pin



## AUDIO RECORDER

MGLab

Support MP3, WMA, WAV; Support USB/SD memory; Recorder rate: highest bit rate for 192 Kbps, WAV format; LCD display, support multilateral languages, enter subdirectory, scan folders, display lyricsLine in record, the external audio source can be recorded into the SD card or U disk; Connect computer: USB sound card; Additional functions: calendar, clock, alarm clock, can by USB cable connect to computer to download SD card; IR remote control; Support Multilanguage, reach to 24 countries



# KELENGKAPAN

## KARPET + PEMASANGAN

Jawa

Bahan terbuat dari serabut plastik, tebal 4 mm Polypropylene, Lebar 4 meter dan panjang mengikuti ukuran ruangan  
Lantai pada ruangan lab. dilapisi karpet



## BOX STAGE MASTER dan BOX STAGE KABEL

Box Stage Master bahan multiplex dilapisi karpet, ukuran 240x180x20 cm

MGLab

Box Stage Kabel bahan multiplex dilapisi karpet, ukuran 240x60x12 cm



## Set Box TV Digital

Matrix

- Menggunakan Antena UHF;
- Lebih peka terhadap sinyal dibanding mesin yg lain;
- Gambar dijamin bagus dan bening;
- 2 Output = HDMI dan RCA



## INSTALASI KABEL AUDIO dan POWER

MGLab

Kabel: LAN  
Connector: Rj45, Kabel RCA, Kabel Listrik



## ROOM SPEAKER

MGLab

Speaker size: 8 inch (Three Way)  
Power: 20.000 PMPO



## INTERACTIVE FLAT PANEL 65inch

+ Floorstand Bracket

- OS Version : Android 11.0
- OPS : Chipset : Intel, CPU : Intel®Core i7 10th Generation
- Memory : 16GB
- HDD : 256 SSD
- Touch Point : 40-point touch; 40-point writing under Windows; 20-point writing under Android
- Built-in Document Camera : 13MP (4K) (At the bottom of the frame)
- Built-in AI Camera : 48MP (4K)



## PENDINGIN RUANGAN (AC)

Cooling Capacity : 1.5 PK  
Voltage : 200 - V/SHZ  
Dimension : Indoor 810 x 220 x 151 mm  
Outdoor 660 x 540 x 260 mm  
Remote Control  
24 Hour On/Off

LG / sejenis



## INTERNET MODEM

Telkomsel

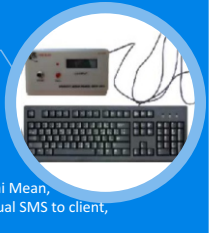
- Ukuran modem 135x112,5x46 (mm)
- DL/ULCat 4; - 2x2MIMO LTE
- 2.4GHz WiFi; - 32User
- Up to 15 Mbps



## EVALUATOR QUIZ

with Keyboard and LCD Display

Proses Instalasi sederhana, Dongle security, Klien Up to 50 channel, Kompatibel dengan tipe Lab Bahasa Digital apapun, LCD Display, Keyboard PS2/Keypad Numerik, Registrasi acak di klien manapun, 5 tombol digital quiz, Aplikasi Software mudah dan familiar (standart office), Support Double Exam, Support import/export data to excel, Modem wavecomm for SMS, Tampilan Grafik report, Tampilan Nilai Mean, Median dan Modus, Detail history jawaban, Auto SMS report to client Manual SMS to client, Pembuatan soal bisa dilakukan di Ms. Word



## OPTIONAL

# TIPE MTM COMPUTERIZED LABORATORIUM BAHASA



## MASTER SIDE

### MASTER KONTROL

Pengendali utama sistem Lab Bahasa yang berbasis software komputer. Bisa dilengkapi dengan sistem touchscreen (optional)

MGLab

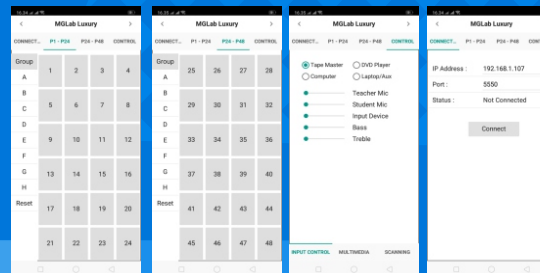


### SYSTEM CONTROL

Micro Control System with internal memory, RS 232 Control  
Digital Circuit Operating Voltage 5 VDC +/-3% TTL Level  
Data Speed 19200 Kbps  
High Power Amplifier  
Tone Control DC Voltage  
Pre Amplifier DC Voltage



- Output Headset Earphone: 8-16Ω    Output Room Speaker : 8Ω  
Power Supply : 220/240V - 50Hz  
Power Consumption : 300-400 Watt  
Input : Headset 30-60Ω Master Tape, Computer, DVD, Audio Recorder, Auxiliary
- Frequency Response : 100-10000 Hz S/N Ratio 50 dB  
Maximum absolute ratings  
1. Operating Voltage 24 VDC (Audio Circuit)  
6 VDC (Digital Circuit)  
2. Operating Temperature 85°C  
3. Stand by temperature 30°C



### SOFTWARE CONTROL

1. Listening function
2. Intercom function
3. Writing function with keyboard control (optional)
4. Conversation
5. Video Repeater
6. Recording audio format mp3
7. Visualized Attender names and layout
8. Preprogrammable Seat Layout
9. User Friendly Graphical User Interface
10. Databased class, teacher, student as user entries
11. Evaluator Quiz (optional)
12. Keyboard Control
13. Inzo Features
14. Group Selector
15. Autorun with Adjustable Delay
16. Integrated on Android Device

### KOMPUTER MASTER

Acer

Processor Intel® Core™ i5  
Memory 8GB DDR4  
Storage 512 GB SSD  
Monitor 21.5 inch  
Windows 11 Home  
DVD RW  
Keyboard + Mouse



### HEADSET TEACHER

MGLab MG 888MV

Mic

Type : Condenser  
Freq Response : 30 - 16.000 Hz  
Impedence : 32Ω, Sensitivity : -58+/- -3dB

Earphone

Freq Response : 20 - 16.000 Hz  
Impedance : 32Ω, Sensitivity : 105 dB/mW, Cable lenght : 1,5 m  
Connector/plug : 3 pin



### MIC WIRELESS

Shure / sejenis

Frequency Stabilization : <±30  
Dynamic Range : >80dB  
Total Harmonic Distortion : >0.5%  
Frequency Response : 40Hz - 18KHz ±3dB  
Signal-to-Noise Ratio : ≥ 100dB  
Signal/Noise Ratio : >82dB



APC

### UPS 700 VA

Capacity 700 VA;  
360 watt;  
50/60Hz +/- 1 Hz;

### MEJA MASTER

MGLab

Bahan : Particle Board 15mm dengan laminasi PVC Sheet warna Beach model U / Standart  
Barang Buatan pabrik (knock down system)  
Ukuran model U : 210 x 120 x 75 cm  
Ukuran model Standart : 180 x 80 x 75 cm



# ARION INDONESIA

www.arionindonesia.co.id  
Jl. Lodan 129 Malang  
info@arionindonesia.id

## KURSI MASTER

MGLab



Kursi dapat diputar, mempunyai sandaran lengan, tinggi dapat diatur.

## AUDIO RECORDER

MGLab



Support MP3, WMA, WAV; Support USB/SD memory; Recorder rate: highest bit rate for 192 Kbps, WAV format; LCD display, support multilateral languages, enter subdirectory, scan folders, display lyricsLine in record, the external audio source can be recorded into the SD card or U disk; Connect computer: USB sound card; Additional functions: calendar, clock, alarm clock, can by USB cable connect to computer to download SD card; IR remote control; Support Multilanguage, reach to 24 countries

## MEJA SISWA (TWINBOOTH)

MGLab



Model Twin Booth  
Bahan: Particle Board 15mm dengan laminasi PVC Sheet warna Beech dengan kaca & nomor siswa di bagian depan  
Ukuran: 123 x 118 x 54 cm  
Barang buatan pabrik (Knock Down System)

## HEADSET SISWA

MGLab MG 888MV



**Mic**  
Type : Condenser  
Freq Response : 30 - 16.000 Hz  
Impedance : 32Ω  
Sensitivity : -58 +/- - 3dB  
**Earphone**  
Freq Response : 20 - 16.000 Hz  
Impedance : 32Ω  
Sensitivity : 1053m  
Cable lenght : 1,5 m  
Connector/plug : 3 pin

## LCD PROJECTOR 3600 Lumens

+ Wall Screen + pasang

Benq / Epson



Sistem Projector : DLP Technology  
Resolusi Native : SVGA (800 x 600)  
Brightness : 3600 Lumens  
Rasio Kontras : 20,000:1  
Rasio Aspek : 4:3  
Rasio Besar (Zoom) : 1.1:1  
Tipe Lampu : 200W  
Kesesuaian Video : NTSC, PAL, SECAM  
Daya / Power : AC100 to 240V, 50/60Hz  
Dimensi (WxHxD)(mm): 296 x 120 x 221

## KARPET + PEMASANGAN

Jawa



Bahan terbuat dari serabut plastik, tebal 4mm  
Polypropylene, Lebar 4 meter dan panjang mengikuti ukuran ruangan lab & dilapisi karpet

# STUDENT SIDE

## STUDENT CONSOLE

MGLab

MG LAB (Student Console)

Minimal memiliki fungsi utama sebagai berikut :

- \* Menggunakan lampu LED
- \* Record Out
- \* Fungsi memanggil/Call; siswa tinggal menekan tombol "Call" untuk menghubungi guru.

### Spesifikasi

Frequency Response : 63-10.000Hz  
S/N Ratio : > 50dB  
Distortion : < 3%  
Input Mic : - 60 dB  
Intercom : - 15 dB, 5000  
Headset : - 10 dB

## STUDENT CHAIR

Fortuner

Bahan stainless steel,  
jenis lipat (Folding Chair)  
Tinggi : 810 mm  
Lebar : 375 mm,  
Panjang : 395 mm



# KELENGKAPAN

## INSTALASI KABEL AUDIO dan POWER

MGLab



Kabel : LAN  
Connector : Rj45, Kabel RCA, Kabel Listrik

## ROOM SPEAKER

MGLab

Speaker Size : 8 inch (Three Way)  
Power : 20.000 PMPO



## Set Box TV Digital

Matrix



Menggunakan Antena UHF;  
Lebih peka terhadap sinyal dibanding mesin yg lain;  
Gambar dijamin bagus dan bening;  
2 Output = HDMI dan RCA

## BOX STAGE MASTER dan BOX STAGE KABEL

MGLab

Box Stage Master bahan multiplex dilapisi karpet, ukuran 240x180x20 cm  
Box Stage Kabel bahan multiplex dilapisi karpet, ukuran 240x60x12 cm



# OPTIONAL

## EVALUATOR QUIZ

with Keyboard and LCD Display

Proses Instalasi sederhana, Dongle security, Klien Up to 50 channel, Kompatible dengan tipe Lab Bahasa Digital apapun, LCD Display, Keyboard PS2/Keypad Numerik, Registrasi acak di klien manapun, 5 tombol digital quiz, Aplikasi Software mudah dan familiar (standart office), Support Double Exam, Support import/export data to excel, Modem wavecomm for SMS, Tampilan Grafik report, Tampilan Nilai Mean, Median dan Modus, Detail history jawaban, Auto SMS report to client  
Manual SMS to client, Pembuatan soal bisa dilakukan di Ms. Word

