

TIPE AA DOUBLE CONSOLE LABORATORIUM BAHASA



MASTER SIDE

MASTER KONTROL

Pengendali utama sistem Lab Bahasa yang berbasis software komputer
Bisa dilengkapi dengan sistem touchscreen (optional)

SYSTEM CONTROL

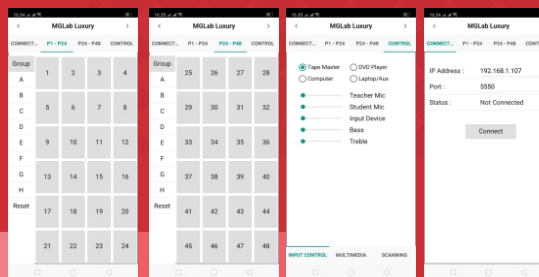
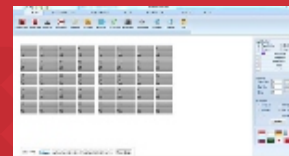
Micro Control System with internal memory, RS 232 Control
Digital Circuit Operating Voltage 5 VDC +/-3% TTL Level
Data Speed 19200 Kbps
High Power Amplifier
Tone Control DC Voltage
Pre Amplifier DC Voltage

Output Headset Earphone: 8-16Ω Output Room Speaker : 8Ω
Power Supply : 220/240V - 50Hz
Power Consumption : 300-400 Watt
Input : Headset 30-60Ω Master Tape, Computer, DVD, Audio Recorder, Auxiliary
Frequency Response : 100-10000 Hz S/N Ratio 50 dB

Maximum absolute ratings

1. Operating Voltage 24 VDC (Audio Circuit)
6 VDC (Digital Circuit)
2. Operating Temperature 85°C
3. Stand by temperature 30°C

MGLab



SOFTWARE CONTROL

1. Listening function
2. Intercom function
3. Writing function with keyboard control (optional)
4. Conversation
5. Video Repeater
6. Recording audio format mp3
7. Visualized Attender names and layout
8. Preprogrammable Seat Layout
9. User Friendly Graphical User Interface
10. Databased class, teacher, student as user entries
11. Evaluator Quiz (optional)
12. Keyboard Control
13. Inzo Features
14. Group Selector
15. Autorun with Adjustable Delay
16. Integrated on Android Device

KOMPUTER MASTER

Processor : Intel® Core™ i5-13400
Memory : 8GB DDR4 SDRAM
Storage : 512 GB SSD PCI Express
Operating System : Windows 11 Home 64-bit
Monitor LED 21.5
Keyboard USB
Mouse USB

Acer



MIC WIRELESS

Shure / sejenis

Frequency Stabilization : ± 30
Dynamic Range : >80dB
Total Harmonic Distortion : >0.5%
Frequency Response : 40Hz - 18KHz ± 3 dB
Signal-to-Noise Ratio : ≥ 100 dB
Signal/Noise Ratio : >82dB



HEADSET TEACHER

MGLab MG 888MV

Mic
Type : Condenser
Freq Response : 30 - 16.000 Hz
Impedance : 32Ω, Sensitivity : -58+/- -3dB
Earphone
Freq Response : 20 - 16.000 Hz
Impedance : 32Ω, Sensitivity : 105 dB/mW, Cable length : 1,5 m
Connector/plug : 3 pin



UPS 700 VA

Capacity 700 VA;
360 watt;
50/60Hz +/- 1 Hz;

APC



ARION INDONESIA

www.arionindonesia.co.id
Jl. Lodan 129 Malang
info@arionindonesia.id



MEJA MASTER

MGLab

Bahan : Particle Board 15mm dengan laminasi PVC Sheet warna Beach model U Barang Buatan pabrik (knock down system) Ukuran model U 210 x 120 x 75 cm



MEJA SISWA (TWINBOOTH)

MGLab

Model Twin Booth Bahan: Particle Board 15 mm dengan laminasi PVC Sheet warna Beech dengan kaca & nomor siswa di bagian depan Ukuran: 123 x 118 x 54 cm Barang buatan pabrik (Knock Down System)



LCD PROJECTOR 3600 Lumens

+ Wall Screen + pasang

Benq / Epson

Sistem Projector : DLP Technology
Resolusi Native : SVGA (800 x 600)
Brightness : 3600 Lumens
Rasio Kontras : 20,000:1
Rasio Aspek : 4:3
Rasio Besar (Zoom) : 1.1:1
Tipe Lampu : 200W
Kesesuaian Video : NTSC, PAL, SECAM
Daya / Power : AC100 to 240V, 50/60Hz
Dimensi (WxHxD)(mm): 296 x 120 x 221

KURSI MASTER

Kursi dapat diputar, mempunyai sandaran lengan, tinggi dapat diatur

MGLab



HEADSET SISWA

MGLab MG 888 MV



Mic
Type : Condenser
Freq Response : 30 - 16.000 Hz
Impedance : 32Ω
Sensitively : -58 +/- - 3dB
Earphone
Freq Response : 20 - 16.000 Hz
Impedance : 32Ω
Sensitively : 1053m
Cable lenght : 1,5 m
Connector/plug : 3 pin

KARPET + PEMASANGAN

Jawa



Bahan terbuat dari serabut plastik, tebal 4mm Polypropylene, Lebar 4 meter dan panjang mengikuti ukuran ruangan lab & dilapisi karpet

STUDENT SIDE

STUDENT CONSOLE

MGLab

MG LAB (Student Console)

Minimal memiliki fungsi utama sebagai berikut :

- * Menggunakan lampu LED
- * Record Out
- * Fungsi memanggil/Call; siswa tinggal menekan tombol "Call" untuk menghubungi guru.



Spesifikasi

Frequency Response : 63-10.000Hz
S/N Ratio : > 50dB
Distortion : < 3%
Input Mic : - 60 dB
Intercom : - 15 dB, 5000
Headset : - 10 dB

STUDENT CHAIR

Fortuner

Bahan stainless steel, jenis lipat (Folding Chair) Tinggi : 810 mm Lebar : 375 mm, Panjang : 395 mm



KELENGKAPAN

INSTALASI KABEL AUDIO dan POWER

MGLab



Kabel : LAN
Connector : Rj45, Kabel RCA, Kabel Listrik

ROOM SPEAKER

MGLab

Speaker Size : 8 inch (Three Way)
Power : 20.000 PMPO



BOX STAGE MASTER dan BOX STAGE KABEL

MGLab

Box Stage Master bahan multiplex dilapisi karpet, ukuran 240x180x20 cm
Box Stage Kabel bahan multiplex dilapisi karpet, ukuran 240x60x12 cm



OPTIONAL

EVALUATOR QUIZ

with Keyboard and LCD Display

Proses Instalasi sederhana, Dongle security, Klien Up to 50 channel, Kompatibel dengan tipe Lab Bahasa Digital apapun, LCD Display, Keyboard PS2/Keypad Numerik, Registrasi acak di klien manapun, 5 tombol digital quiz, Aplikasi Software mudah dan familiar (standart office), Support Double Exam, Support import/export data to excel, Modem wavecomm for SMS, Tampilan Grafik report, Tampilan Nilai Mean, Median dan Modus, Detail history jawaban, Auto SMS report to client Manual SMS to client, Pembuatan soal bisa dilakukan di Ms. Word



TIPE AAC DOUBLE CONSOLE LABORATORIUM BAHASA



MASTER SIDE

MASTER KONTROL

Pengendali utama sistem Lab Bahasa yang berbasis software komputer. Bisa dilengkapi dengan sistem touchscreen (optional).

SYSTEM CONTROL

Micro Control System with internal memory, RS 232 Control, Digital Circuit, Operating Voltage 5 VDC +/-3% TTL Level, Data Speed 19200 Kbps, High Power Amplifier, Tone Control DC Voltage, Pre Amplifier DC Voltage.

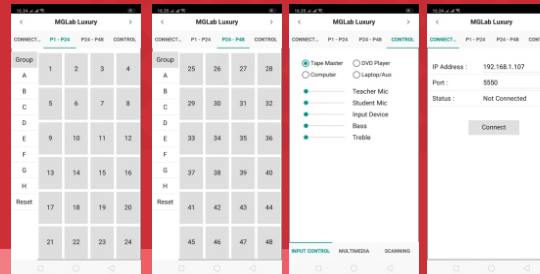
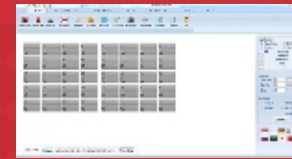
Output Headset Earphone: 8-16Ω Output Room Speaker : 8Ω
Power Supply : 220/240V - 50Hz
Power Consumption : 300-400 Watt
Input : Headset 30-60Ω, Master Tape, Computer, DVD, Audio Recorder, Auxiliary

Frequency Response : 100-10000 Hz S/N Ratio 50 dB

Maximum absolute ratings

- Operating Voltage 24 VDC (Audio Circuit)
6 VDC (Digital Circuit)
- Operating Temperature 85°C
- Stand by temperature 30°C

MGLab



SOFTWARE CONTROL

- Listening function
- Intercom function
- Writing function with keyboard control (optional)
- Conversation
- Video Repeater
- Recording audio format mp3
- Visualized Attender names and layout
- Preprogrammable Seat Layout
- User Friendly Graphical User Interface
- Databased class, teacher, student as user entries
- Evaluator Quiz (optional)
- Keyboard Control
- Inzo Features
- Group Selector
- Autorun with Adjustable Delay
- Integrated on Android Device

KOMPUTER MASTER

Processor : Intel® Core™ i5-13400
Memory : 8GB DDR4 SDRAM
Storage : 512 GB SSD PCI Express
Operating System : Windows 11 Home 64-bit
Monitor LED 21.5"
Keyboard USB
Mouse USB

Acer



MIC WIRELESS

Frequency Stabilization : ± 30
Dynamic Range : >80dB
Total Harmonic Distortion : >0.5%
Frequency Response : 40Hz - 18KHz ± 3 dB
Signal-to-Noise Ratio : ≥ 100 dB
Signal/Noise Ratio : >82dB

Shure / sejenis



HEADSET TEACHER

Mic : MGLab MG 888MV
Type : Condenser
Freq Response : 30 - 16.000 Hz
Impedance : 32Ω, Sensitivity : -58+/- -3dB
Earphone
Freq Response : 20 - 16.000 Hz
Impedance : 32Ω, Sensitivity : 105 dB/mW, Cable lenght : 1,5 m
Connector/plug : 3 pin



UPS 700 VA

Capacity 700 VA;
360 watt;
50/60Hz +/- 1 Hz;

APC



MEJA MASTER

Bahan : Particle Board 15mm dengan laminasi PVC Sheet warna Beach model U / Standart
Barang Buatan pabrik (knock down system)
Ukuran model U : 210 x 120 x 75 cm
Ukuran model Standart : 180 x 80 x 75 cm

MGLab



ARION INDONESIA

www.arionindonesia.co.id
Jl . Lodan 129 Malang
info@arionindonesia.id

KURSI MASTER

MGLab



Kursi dapat diputar, mempunyai sandaran lengan, tinggi dapat diatur.

AUDIO RECORDER

MGLab



Support MP3, WMA, WAV; Support USB/SD memory; Recorder rate: highest bit rate for 192 Kbps, WAV format; LCD display, support multilateral languages, enter subdirectory, scan folders, display lyricsLine in record, the external audio source can be recorded into the SD card or U disk; Connect computer: USB sound card; Additional functions: calendar, clock, alarm clock, can by USB cable connect to computer to download SD card; IR remote control; Support Multilanguage, reach to 24 countries

MEJA SISWA (TWINBOOTH)

MGLab



Model Twin Booth
Bahan: Particle Board 15mm dengan laminasi PVC Sheet warna Beech dengan kaca & nomor siswa di bagian depan
Ukuran: 123 x 118 x 54 cm
Barang buatan pabrik (Knock Down System)

HEADSET SISWA

MGLab MG 888MV



Mic
Type : Condenser
Freq Response : 30 - 16.000 Hz
Impedance : 32Ω
Sensitivity : -58 +/- 3dB
Earphone
Freq Response : 20 - 16.000 Hz
Impedance : 32Ω
Sensitivity : 1053m
Cable length : 1,5 m
Connector/plug : 3 pin

AUDIO RECORDER

MGLab



Support MP3, WMA, WAV; Support USB/SD memory; Recorder rate: highest bit rate for 192 Kbps, WAV format; LCD display, support multilateral languages, enter subdirectory, scan folders, display lyricsLine in record, the external audio source can be recorded into the SD card or U disk; Connect computer: USB sound card; Additional functions: calendar, clock, alarm clock, can by USB cable connect to computer to download SD card; IR remote control; Support Multilanguage, reach to 24 countries

LCD PROJECTOR 3600 Lumens

+ Wall Screen + pasang

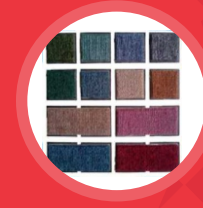
Benq / Epson



Sistem Projector : DLP Technology
Resolusi Native : SVGA (800 x 600)
Brightness : 3600 Lumens
Rasio Kontras : 20,000:1
Rasio Aspek : 4:3
Rasio Besar (Zoom) : 1.1:1
Tipe Lampu : 200W
Kesesuaian Video : NTSC, PAL, SECAM
Daya / Power : AC100 to 240V, 50/60Hz
Dimensi (WxHxD)(mm): 296 x 120 x 221

KARPET + PEMASANGAN

Jawa



Bahan terbuat dari serabut plastik, tebal 4mm Polypropylene, Lebar 4 meter dan panjang mengikuti ukuran ruangan lab & dilapisi karpet

BOX STAGE MASTER dan BOX STAGE KABEL

MGLab

Box Stage Master bahan multiplex dilapisi karpet, ukuran 240x180x20 cm
Box Stage Kabel bahan multiplex dilapisi karpet, ukuran 240x60x12 cm



STUDENT SIDE

STUDENT CONSOLE

MGLab



MG LAB (Student Console)
Minimal memiliki fungsi utama sebagai berikut :
* Menggunakan lampu LED
* Record Out
* Fungsi memanggil/Call; siswa tinggal menekan tombol "Call" untuk menghubungi guru.

Spesifikasi

Frequency Response : 63-10.000Hz
S/N Ratio : > 50dB
Distortion : < 3%
Input Mic : - 60 dB
Intercom : - 15 dB, 5000
Headset : - 10 dB

STUDENT CHAIR

MGLab



Bahan stainless steel, jenis lipat (Folding Chair)
Tinggi : 810 mm
Lebar : 375 mm,
Panjang : 395 mm

KELENGKAPAN

INSTALASI KABEL AUDIO dan POWER

MGLab



Kabel : LAN
Connector : Rj45, Kabel RCA, Kabel Listrik

ROOM SPEAKER

MGLab



Speaker Size : 8 inch (Three Way)
Power : 20.000 PMPO

OPTIONAL

EVALUATOR QUIZ

with Keyboard and LCD Display



Proses Instalasi sederhana, Dongle security, Klien Up to 50 channel, Kompatible dengan tipe Lab Bahasa Digital apapun, LCD Display, Keyboard PS2/Keypad Numerik, Registrasi acak di klien manapun, 5 tombol digital quiz, Aplikasi Software mudah dan familiar (standart office), Support Double Exam, Support import/export data to excel, Modem wavecomm for SMS, Tampilan Grafik report, Tampilan Nilai Mean, Median dan Modus, Detail history jawaban, Auto SMS report to client
Manual SMS to client, Pembuatan soal bisa dilakukan di Ms. Word

TIPE AAC FLEX DOUBLE CONSOLE LABORATORIUM BAHASA



MASTER SIDE

MASTER KONTROL

Pengendali utama sistem Lab Bahasa yang berbasis software komputer. Bisa dilengkapi dengan sistem touchscreen (optional).

SYSTEM CONTROL

Micro Control System with internal memory, RS 232 Control
Digital Circuit Operating Voltage 5 VDC +/-3% TTL Level
Data Speed 19200 Kbps
High Power Amplifier
Tone Control DC Voltage
Pre Amplifier DC Voltage

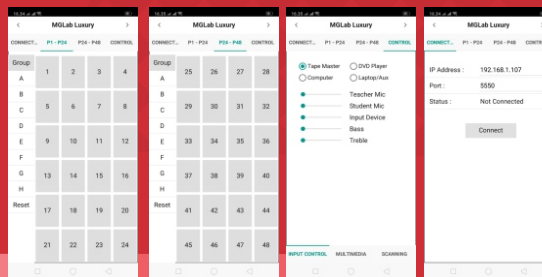
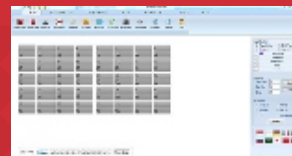
Output Headset Earphone: 8-16Ω Output Room Speaker : 8Ω
Power Supply : 220/240V - 50Hz
Power Consumption : 300-400 Watt
Input : Headset 30-60Ω Master Tape, Computer, DVD, Audio Recorder, Auxiliary

Frequency Response : 100-10000 Hz S/N Ratio 50 dB

Maximum absolute ratings

1. Operating Voltage 24 VDC (Audio Circuit)
6 VDC (Digital Circuit)
2. Operating Temperature 85°C
3. Stand by temperature 30°C

MGLab



SOFTWARE CONTROL

1. Listening function
2. Intercom function
3. Writing function with keyboard control (optional)
4. Conversation
5. Video Repeater
6. Recording audio format mp3
7. Visualized Attender names and layout
8. Preprogrammable Seat Layout
9. User Friendly Graphical User Interface
10. Databased class, teacher, student as user entries
11. Evaluator Quiz (optional)
12. Keyboard Control
13. Inzo Features
14. Group Selector
15. Autorun with Adjustable Delay
16. Integrated on Android Device

KOMPUTER MASTER

Processor : Intel® Core™ i5-13400
Memory : 8GB DDR4 SDRAM
Storage : 512 GB SSD PCI Express
Operating System : Windows 11 Home 64-bit
Monitor LED 21.5
Keyboard USB
Mouse USB

Acer



MIC WIRELESS

Frequency Stabilization : ± 30
Dynamic Range : >80dB
Total Harmonic Distortion : >0.5%
Frequency Response : 40Hz - 18KHz ± 3 dB
Signal-to-Noise Ratio : ≥ 100 dB
Signal/Noise Ratio : >82dB

Shure / sejenis



HEADSET TEACHER

Mic
Type : Condenser
Freq Response : 30 - 16.000 Hz
Impedence : 32Ω, Sensitivity : -58+/- -3dB
Earphone
Freq Response : 20 - 16.000 Hz
Impedance : 32Ω, Sensitivity : 105 dB/mW, Cable lenght : 1,5 m
Connector/plug : 3 pin

Shure / sejenis



UPS 700 VA

Capacity 700 VA;
360 watt;
50/60Hz +/- 1 Hz;

APC



MEJA MASTER

Bahan : Particle Board 15mm dengan laminasi PVC Sheet warna Beach model U / Standart
Barang Buatan pabrik (knock down system)

Ukuran model U : 210 x 120 x 75 cm
Ukuran model Standart : 180 x 80 x 75 cm

MGLab



ARION INDONESIA

www.arionindonesia.co.id
Jl. Lodan 129 Malang
info@arionindonesia.id

KURSI MASTER

Kursi dapat diputar, mempunyai sandaran lengan, tinggi dapat diatur.



AUDIO RECORDER

Support MP3, WMA, WAV; Support USB/SD memory; Recorder rate: highest bit rate for 192 Kbps, WAV format; LCD display, support multilateral languages, enter subdirectory, scan folders, display lyricsLine in record, the external audio source can be recorded into the SD card or U disk; Connect computer: USB sound card; Additional functions: calendar, clock, alarm clock, can by USB cable connect to computer to download SD card; IR remote control; Support Multilanguage, reach to 24 countries



DOCUMENT CAMERA

Document Camera, 16X total zoom (2X AVerZoom™ + 8X digital zoom), HDMI Output, 5M Pixel, Resolution Full HD1080p (1920 x 1080)



MEJA SISWA (TWINBOOTH)

Model Twin Booth
Bahan: Particle Board 15mm dengan laminasi PVC Sheet warna Beech dengan kaca & nomor siswa di bagian depan
Ukuran: 123 x 118 x 54 cm
Barang buatan pabrik (Knock Down System)



HEADSET SISWA

Mic
Type : Condenser
Freq Response : 30 - 16.000 Hz
Impedance : 32Ω
Sensitively : -58 +/- 3dB

Earphone
Freq Response : 20 - 16.000 Hz
Impedance : 32Ω
Sensitively : 1053m
Cable lenght : 1,5 m
Connector/plug : 3 pin



AUDIO RECORDER

Support MP3, WMA, WAV; Support USB/SD memory; Recorder rate: highest bit rate for 192 Kbps, WAV format; LCD display, support multilateral languages, enter subdirectory, scan folders, display lyricsLine in record, the external audio source can be recorded into the SD card or U disk; Connect computer: USB sound card; Additional functions: calendar, clock, alarm clock, can by USB cable connect to computer to download SD card; IR remote control; Support Multilanguage, reach to 24 countries



STUDENT SIDE

STUDENT CONSOLE

MG LAB (Student Console)
Minimal memiliki fungsi utama sebagai berikut :
* Menggunakan lampu LED
* Record Out
* Fungsi memanggil/Call; siswa tinggal menekan tombol "Call" untuk menghubungi guru.



Spesifikasi

Frequency Response : 63-10.000Hz
S/N Ratio : > 50dB
Distortion : < 3%
Input Mic : - 60 dB
Intercom : - 15 dB, 5000
Headset : - 10 dB

STUDENT CHAIR

Bahan stainless steel, jenis lipat (Folding Chair)
Tinggi : 810 mm
Lebar : 375 mm,
Panjang : 395 mm



KELENGKAPAN

INSTALASI KABEL AUDIO dan POWER

Kabel : LAN
Connector : Rj45, Kabel RCA, Kabel Listrik



ROOM SPEAKER

Speaker Size : 8 inch (Three Way)
Power : 20.000 PMPO



LCD PROJECTOR 3600 Lumens

+ Wall Screen + pasang Benq / Epson



Sistem Projector : DLP Technology
Resolusi Native : SVGA (800 x 600)
Brightness : 3600 Lumens
Rasio Kontras : 20,000:1
Rasio Aspek : 4:3
Rasio Besar (Zoom) : 1.1:1
Tipe Lampu : 200W
Kesesuaian Video : NTSC, PAL, SECAM
Daya / Power : AC100 to 240V, 50/60Hz
Dimensi (WxHxD)(mm): 296 x 120 x 221

KARPET + PEMASANGAN

Bahan terbuat dari serabut plastik, tebal 4mm Polypropylene, Lebar 4 meter dan panjang mengikuti ukuran ruangan lab & dilapisi karpet



BOX STAGE MASTER dan BOX STAGE KABEL

Box Stage Master bahan multiplex dilapisi karpet, ukuran 240x180x20 cm
Box Stage Kabel bahan multiplex dilapisi karpet, ukuran 240x60x12 cm



OPTIONAL

EVALUATOR QUIZ

with Keyboard and LCD Display

Proses Instalasi sederhana, Dongle security, Klien Up to 50 channel, Kompatible dengan tipe Lab Bahasa Digital apapun, LCD Display, Keyboard PS2/Keypad Numerik, Registrasi acak di klien manapun, 5 tombol digital quiz, Aplikasi Software mudah dan familiar (standart office), Support Double Exam, Support import/export data to excel, Modem wavecomm for SMS, Tampilan Grafik report, Tampilan Nilai Mean, Median dan Modus, Detail history jawaban, Auto SMS report to client Manual SMS to client, Pembuatan soal bisa dilakukan di Ms. Word



TIPE AAC FLEXPLUS DOUBLE CONSOLE LABORATORIUM BAHASA



MASTER SIDE

MASTER KONTROL

Pengendali utama sistem Lab Bahasa yang berbasis software komputer. Bisa dilengkapi dengan sistem touchscreen (optional).

SYSTEM CONTROL

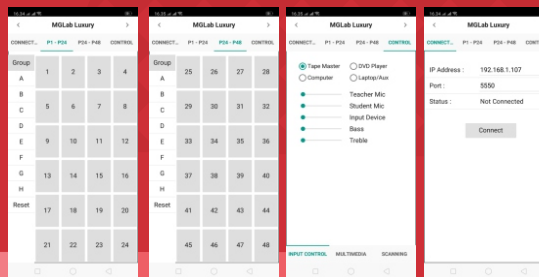
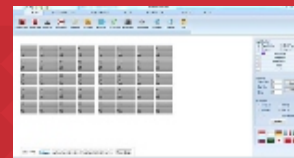
Micro Control System with internal memory, RS 232 Control
Digital Circuit Operating Voltage 5 VDC +/-3% TTL Level
Data Speed 19200 Kbps
High Power Amplifier
Tone Control DC Voltage
Pre Amplifier DC Voltage

Output Headset Earphone: 8-16Ω Output Room Speaker : 8Ω
Power Supply : 220/240V - 50Hz
Power Consumption : 300-400 Watt
Input : Headset 30-60Ω Master Tape, Computer, DVD, Audio Recorder, Auxiliary

Frequency Response : 100-10000 Hz S/N Ratio 50 dB

Maximum absolute ratings

- Operating Voltage 24 VDC (Audio Circuit)
6 VDC (Digital Circuit)
- Operating Temperature 85°C
- Stand by temperature 30°C



SOFTWARE CONTROL

- Listening function
- Intercom function
- Writing function with keyboard control (optional)
- Conversation
- Video Repeater
- Recording audio format mp3
- Visualized Attender names and layout
- Preprogrammable Seat Layout
- User Friendly Graphical User Interface
- Databased class, teacher, student as user entries
- Evaluator Quiz (optional)
- Keyboard Control
- Inzo Features
- Group Selector
- Autorun with Adjustable Delay
- Integrated on Android Device

KOMPUTER MASTER

Processor : Intel® Core™ i5-13400
Memory : 8GB DDR4 SDRAM
Storage : 512 GB SSD PCI Express
Operating System : Windows 11 Home 64-bit
Monitor LED 21.5
Keyboard USB
Mouse USB

Acer



MIC WIRELESS

Frequency Stabilization : ± 30
Dynamic Range : >80dB
Total Harmonic Distortion : >0.5%
Frequency Response : 40Hz - 18KHz ± 3 dB
Signal-to-Noise Ratio : ≥ 100 dB
Signal/Noise Ratio : >82dB

Shure / sejenis



HEADSET TEACHER

Mic
Type : Condenser
Freq Response : 30 - 16.000 Hz
Impedence : 32Ω, Sensitivity : -58+/- -3dB
Earphone
Freq Response : 20 - 16.000 Hz
Impedance : 32Ω, Sensitivity : 105 dB/mW, Cable length : 1,5 m
Connector/plug : 3 pin



UPS 700 VA

APC
Capacity 700 VA;
360 watt;
50/60Hz +/- 1 Hz;



MEJA MASTER

Bahan : Particle Board 15mm dengan laminasi PVC Sheet warna Beach model U / Standart
Barang Buatan pabrik (knock down system)
Ukuran model U : 210 x 120 x 75 cm
Ukuran model Standart : 180 x 80 x 75 cm



ARION INDONESIA

www.arionindonesia.co.id
Jl. Lodan 129 Malang
info@arionindonesia.id

KURSI MASTER

Kursi dapat diputar, mempunyai sandaran lengan, tinggi dapat diatur.



STUDENT CHAIR

Bahan stainless steel, jenis lipat (Folding Chair)
Tinggi : 810 mm
Lebar : 375 mm
Panjang : 395 mm



ROOM SPEAKER

Speaker Size : 8 inch (Three Way)
Power : 20.000 PMPO



AUDIO RECORDER

Support MP3, WMA, WAV; Support USB/SD memory; Recorder rate: highest bit rate for 192 Kbps, WAV format; LCD display, support multilateral languages, enter subdirectory, scan folders, display lyricsLine in record, the external audio source can be recorded into the SD card or U disk; Connect computer: USB sound card; Additional functions: calendar, clock, alarm clock, can by USB cable connect to computer to download SD card; IR remote control; Support Multilanguage, reach to 24 countries



HEADSET SISWA

Earphone
Freq Response : 20 - 16.000 Hz
Impedance : 32Ω
Sensitively : 1053m
Mic Cable lenght : 1,5 m
Type : Condenser Connector/plug : 3 pin
Freq Response : 30 - 16.000 Hz
Impedance : 32Ω
Sensitively : -58 +/- - 3dB



AUDIO RECORDER

Support MP3, WMA, WAV; Support USB/SD memory; Recorder rate: highest bit rate for 192 Kbps, WAV format; LCD display, support multilateral languages, enter subdirectory, scan folders, display lyricsLine in record, the external audio source can be recorded into the SD card or U disk; Connect computer: USB sound card; Additional functions: calendar, clock, alarm clock, can by USB cable connect to computer to download SD card; IR remote control; Support Multilanguage, reach to 24 countries



LCD PROJECTOR 3600 Lumens

+ Wall Screen + pasang Benq / Epson
Sistem Projector : DLP Technology
Resolusi Native : SVGA (800 x 600)
Brightness : 3600 Lumens
Rasio Kontras : 20,000:1
Rasio Aspek : 4:3
Rasio Besar (Zoom) : 1.1:1
Tipe Lampu : 200W
Kesesuaian Video : NTSC, PAL, SECAM
Daya / Power : AC100 to 240V, 50/60Hz
Dimensi (WxHxD)(mm): 296 x 120 x 221



KARPET + PEMASANGAN

Bahan terbuat dari serabut plastik, tebal 4mm Polypropylene, Lebar 4 meter dan panjang mengikuti ukuran ruangan lab & dilapisi karpet



STUDENT SIDE

STUDENT CONSOLE

MG LAB (Student Console)
Minimal memiliki fungsi utama sebagai berikut :
* Menggunakan lampu LED
* Record Out
* Fungsi memanggil/Call; siswa tinggal menekan tombol "Call" untuk menghubungi guru.



Spesifikasi

Frequency Response : 63-10.000Hz
S/N Ratio : > 50dB
Distortion : < 3%
Input Mic : - 60 dB
Intercom : - 15 dB, 5000
Headset : - 10 dB

MEJA SISWA (TWINBOOTH)

Model Twin Booth
Bahan : Particle Board 15mm dengan laminasi PVC Sheet warna Beech dengan kaca & nomor siswa di bagian depan
Ukuran : 123 x 118 x 54 cm
Barang buatan pabrik (Knock Down System)



Monitor LCD 21,5 inch (2 siswa 1 monitor) + instalasi

LCD Screen size 21,5",
Aspect Ratio 16:9,
Resolution 1920x1080



Splitter HDMI + Kabel HDMI 1 Set

Aten / Netline



KELENGKAPAN

INSTALASI KABEL AUDIO dan POWER

Kabel : LAN
Connector : Rj45, Kabel RCA, Kabel Listrik



BOX STAGE MASTER dan BOX STAGE KABEL

Box Stage Master bahan multiplex dilapisi karpet, ukuran 240x180x20 cm
Box Stage Kabel bahan multiplex dilapisi karpet, ukuran 240x60x12 cm



OPTIONAL

EVALUATOR QUIZ with Keyboard and LCD Display

Proses Instalasi sederhana, Dongle security, Klien Up to 50 channel, Kompatible dengan tipe Lab Bahasa Digital apapun, LCD Display, Keyboard PS2/Keypad Numerik, Registrasi acak di klien manapun, 5 tombol digital quiz, Aplikasi Software mudah dan familiar (standart office), Support Double Exam, Support import/export data to excel, Modem wavcomm for SMS, Tampilan Grafik report, Tampilan Nilai Mean, Median dan Modus, Detail history jawaban, Auto SMS report to client Manual SMS to client, Pembuatan soal bisa dilakukan di Ms. Word



TIPE BU DOUBLE CONSOLE LABORATORIUM BAHASA



ARION INDONESIA

www.arionindonesia.co.id
Jl. Lodan 129 Malang
info@arionindonesia.id

MASTER SIDE

MASTER KONTROL

Micro-Computer Mobile
Keyboard
(including computer control function)

- Light-touch button
- Teaching function control
- Group discussion control
- Monitor textbook
- Examination function
- 5 inches LCD, high resolution dynamic display
- Cycle monitor students
- Rob answer function
- All control, group control, single control function
- Group teaching
- Demonstration
- Several audio channels for switch
- VGA control function
- Free talk control
- System reset function
- Forced function
- Monitor any student

FUNGSI UTAMA SYSTEM

- Control System, melalui PC Guru
- Penyesuaian kecepatan tape
- Fungsi Sentence Pause
- Fungsi SP, SPS, SSP, SPSPS
- Perekaman rentang panjang
- 3 audio channel
- 8 audio input channel
- Fungsi pengulangan secara otomatis
- Perekaman secara manual antara 2 master recorder
- Fungsi Pengawasan Perekaman
- Fungsi Latihan/Test
- Fungsi Test
- System self-detection
- Roll Call Function

FITUR LAB BAHASA

- Dapat dihubungkan dengan speaker ruangan
- Tersedia 3 AV input channel
- Tersedia satu VGA signal untuk output ke projector atau peralatan lainnya.
- Sistem memiliki fungsi ujian paperless
- Tersedia del "Random Test", AB Paper Test, dan Evaluasi terhadap hasil.
- Pada student client dapat Choose Program - A atau B
- Ada Volume Adjustment
- Interface LCD Display
- Several Examination Function
- Rob ro answer function



KOMPUTER MASTER

Processor : Intel® Core™ i5-13400
Memory : 8GB DDR4 SDRAM
Storage : 512 GB SSD PCI Express
Operating System : Windows 11 Home 64-bit
Monitor LED 21.5
Keyboard USB
Mouse USB

Acer



MASTER POWER SUPPLY

Kuantitas max sampai 120 kursi, dengan komputer dan keyboard terhubung stop kontak yang tersedia untuk mewujudkan sistem dual control, tersedia untuk memilih satu saluran audio untuk output, ke seluruh sistem bekerja di bawah kontrol konsol utama.

Sistem Daya Pasokan Listrik

Tegangan output: 12V
Arus: 22A/40A
Daya Output: 400W



HEADSET TEACHER

Mic

Type : Condenser
Freq Response : 30 - 16.000 Hz
Impedance : 32Ω, Sensitivity : -58+/- -3dB
Earphone
Freq Response : 20 - 16.000 Hz
Impedance : 32Ω, Sensitivity : 105 dB/mW, Cable length : 1,5 m
Connector/plug : 3 pin



MIC WIRELESS

Frequency Stabilization : ± 30
Dynamic Range : >80dB
Total Harmonic Distortion : >0.5%
Frequency Response : 40Hz - 18KHz ± 3 dB
Signal-to-Noise Ratio : ≥ 100 dB
Signal/Noise Ratio : >82dB

Shure / sejenis



MEJA MASTER

Bahan : Particle Board 15mm dengan laminasi PVC Sheet warna Beach model U / Standart
Barang Buatan pabrik (knock down system)
Ukuran model U : 210 x 120 x 75 cm
Ukuran model Standart : 180 x 80 x 75 cm



STUDENT SIDE

UPS 700 VA

APC
Capacity 700 VA;
360 watt;
50/60Hz +/- 1 Hz;

KURSI MASTER

Kursi dapat diputar,
mempunyai sandaran lengan,
tinggi dapat diatur.

CENTRAL CONTROL

Power supply: AC: 200-240V
Signal interterface: Audio/video input & output
VGA input (include laptop)
VGA output
3.5 stereo output
Power Control: Built-in projector power off protection
Delay time can be modified
Built-in electronic screen's power supply
Control method: Db9 standard learning interface
Infrared RS 485 bilateral control

STUDENT CONSOLE

DIGITAL MONITOR (include QUIZ)

MG LAB (Student Console)

Minimal memiliki fungsi utama:

- * Menggunakan tampilan LCD Display
- * Fungsi memanggil / Call, siswa tinggal menekan "tombol panggil / Call" untuk menghubungi guru
- * Tombol Volume
- * Tombol Quiz A/B/C/D/E
- * Tombol up = up the text exam
- * Tombol down = down the text exam
- * Tombol play = memilih channel program

MEJA SISWA (TWINBOOTH)

Model Twin Booth

Bahan: Particle Board 15 mm dengan laminasi PVC Sheet warna Beech dengan kaca & nomor siswa di bagian depan
Ukuran: 123 x 118 x 54 cm
Barang buatan pabrik (Knock Down System)

STUDENT CHAIR

Bahan stainless steel, Tinggi: 810 mm,
Lebar: 375 mm, Panjang: 395 mm
jenis lipat (Folding Chair)

HEADSET SISWA

Earphone

Freq Response : 20 - 16.000 Hz
Impedance : 32 Ω
Sensitively : 105 dB/mW
Cable lenght : 1,5 m
Connector/plug : 3 pin

Mic
Type : Condenser
Freq Response : 30 - 16.000 Hz
Impedance : 32 Ω
Sensitively : -58+/- -3dB

KELENGKAPAN

INSTALASI KABEL AUDIO dan POWER

Kabel: LAN
Connector: Rj45, Kabel RCA, Kabel Listrik

STUDENT SPLITTER

ROOM SPEAKER

Speaker size: 8 inch (Three Way)
Power: 20.000 PMPO

LCD PROJECTOR 3600 Lumens

+ Wall Screen + Pasang Benq / Epson

Sistem Projector : DLP Technology
Resolusi Native : SVGA (800 x 600)
Brightness : 3600 Lumens
Rasio Kontras : 20,000:1
Rasio Aspek : 4:3
Rasio Besaran (Zoom) : 1.1:1
Tipe Lampu : 200W
Kesesuaian Video : NTSC, PAL, SECAM
Daya / Power : AC100 to 240V, 50/60Hz
Dimensi (WxHxD)(mm): 296 x 120 x 221

KARPET + PEMASANGAN

Bahan terbuat dari serabut plastik, tebal 4 mm Polypropylene, Lebar 4 meter dan panjang mengikuti ukuran ruangan
Lantai pada ruangan lab. dilapisi karpet

BOX STAGE MASTER dan BOX STAGE KABEL

Box Stage Master bahan multiplex dilapisi karpet, ukuran 240x180x20 cm
Box Stage Kabel bahan multiplex dilapisi karpet, ukuran 240x60x12 cm

TIPE LUX DOUBLE CONSOLE LABORATORIUM BAHASA



MASTER SIDE

MASTER KONTROL

Pengendali utama sistem Lab Bahasa yang berbasis software komputer. Bisa dilengkapi dengan sistem touchscreen (optional).

SYSTEM CONTROL

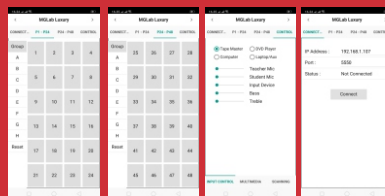
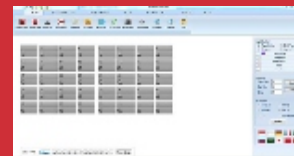
Micro Control System with internal memory, RS 232 Control
Digital Circuit Operating Voltage 5 VDC +/-3% TTL Level
Data Speed 19200 Kbps
High Power Amplifier
Tone Control DC Voltage
Pre Amplifier DC Voltage

Output Headset Earphone: 8-16Ω Output Room Speaker : 8Ω
Power Supply : 220/240V - 50Hz
Power Consumption : 300-400 Watt
Input : Headset 30-60Ω Master Tape, Computer, DVD, Audio Recorder, Auxiliary

Frequency Response : 100-10000 Hz S/N Ratio 50 dB

Maximum absolute ratings

1. Operating Voltage 24 VDC (Audio Circuit)
6 VDC (Digital Circuit)
2. Operating Temperature 85°C
3. Stand by temperature 30°C



SOFTWARE CONTROL

1. Listening function
2. Intercom function
3. Writing function with keyboard control (optional)
4. Conversation
5. Video Repeater
6. Recording audio format mp3
7. Visualized Attender names and layout
8. Preprogrammable Seat Layout
9. User Friendly Graphical User Interface
10. Databased class, teacher, student as user entries
11. Evaluator Quiz (optional)
12. Keyboard Control
13. Inzo Features
14. Group Selector
15. Autorun with Adjustable Delay
16. Integrated on Android Device

KOMPUTER MASTER

Processor : Intel® Core™ i5-13400
Memory : 8GB DDR4 SDRAM
Storage : 512 GB SSD PCI Express
Operating System : Windows 11 Home 64-bit
Monitor LED 21.5"
Keyboard USB
Mouse USB

Acer



HEADSET TEACHER

Mic MGLab MG 888MV
Type : Condenser
Freq Response : 30 - 16.000 Hz
Impedance : 32Ω, Sensitivity : -58+/- -3dB
Earphone
Freq Response : 20 - 16.000 Hz
Impedance : 32Ω, Sensitivity : 105 dB/mW, Cable length : 1,5 m
Connector/plug : 3 pin



MIC WIRELESS

Frequency Stabilization : <±30
Dynamic Range : >80dB
Total Harmonic Distortion : >0.5%
Frequency Response : 40Hz - 18KHz ±3dB
Signal-to-Noise Ratio : ≥ 100dB
Signal/Noise Ratio : >82dB

Shure / sejenis



UPS 700 VA

Capacity 700 VA;
360 watt;
50/60Hz +/- 1 Hz;

APC



MEJA MASTER

Bahan : Particle Board 15mm dengan laminasi PVC Sheet warna Beach model U / Standart
Barang Buatan pabrik (knock down system)
Ukuran model U : 210 x 120 x 75 cm
Ukuran model Standart : 180 x 80 x 75 cm



CENTRAL CONTROL

Power supply: AC: 200-240V
Signal interterface: Audio/video input & output
VGA input (include laptop)
VGA output
3.5 stereo output
Power Control: Built-in projector power off protection
Delay time can be modified
Built-in electronic screen's power supply
Control method: Db9 standard learning interface
Infrared RS 485 bilateral control



ARION INDONESIA

www.arionindonesia.co.id
Jl. Lodan 129 Malang
info@arionindonesia.id

KURSI MASTER

Kursi dapat diputar, mempunyai sandaran lengan, tinggi dapat diatur.



DOCUMENT CAMERA

Document Camera,
16X total zoom (2X AVerZoom™ + 8X digital zoom),
HDMI Output, 5M Pixel,
Resolution Full HD1080p (1920 x 1080)



AUDIO RECORDER

Support MP3, WMA, WAV; Support USB/SD memory;
Recorder rate: highest bit rate for 192 Kbps, WAV format;
LCD display, support multilateral languages, enter
subdirectory, scan folders, display lyricsLine in record,
the external audio source can be recorded into the SD
card or U disk; Connect computer: USB sound card;
Additional functions: calendar, clock, alarm clock, can by
USB cable connect to computer to download SD card; IR remote
control; Support Multilanguage, reach to 24 countries



MOUSE + PEN TABLET

- 8" x 6" working area, comfortable for easy drawing, painting and using the PC
- Cordless mouse and pen design gives you unlimited freedom
- 3D scroll wheel for fast browsing on the internet and in Windows documents
- Make handwriting notes/drawings on the internet & any application program
- 1024-level pressure sensitivity for all kinds of shapes and thickness control



STUDENT SIDE

STUDENT CONSOLE

MG LAB (Student Console)
Minimal memiliki fungsi utama sebagai berikut:
* Menggunakan lampu LED
* Record Out
* Fungsi memanggil/Call; siswa tinggal menekan tombol "Call" untuk menghubungi guru



Spesifikasi

Frequency Response : 63 - 10.000 Hz
S/N Ratio : > 50 dB
Distortion : < 3%
Input Mic : - 60 dB
Intercom : - 15 dB, 5000
Headset : - 10 dB

STUDENT CHAIR

Bahan stainless steel,
Tinggi: 810 mm,
Lebar: 375 mm
Panjang: 395 mm
jenis lipat (Folding Chair)



MEJA SISWA (TWINBOOTH)

Model Twin Booth
Bahan: Particle Board 15 mm dengan laminasi PVC Sheet warna Beech dengan kaca & nomor siswa di bagian depan
Ukuran: 123 x 118 x 54 cm
Barang buatan pabrik (Knock Down System)



HEADSET SISWA

Mic

Type : Condenser
Freq Response : 30 - 16.000 Hz
Impedence : 32Ω
Sensitively : -58+/- -3dB

Earphone

Impedance : 32Ω
Sensitively : 105 dB/mW
Cable length : 1,5 m
Connector/plug : 3 pin



AUDIO RECORDER

Support MP3, WMA, WAV; Support USB/SD memory;
Recorder rate: highest bit rate for 192 Kbps, WAV format;
LCD display, support multilateral languages, enter
subdirectory, scan folders, display lyricsLine in record,
the external audio source can be recorded into the SD
card or U disk; Connect computer: USB sound card;
Additional functions: calendar, clock, alarm clock, can by
USB cable connect to computer to download SD card; IR remote
control; Support Multilanguage, reach to 24 countries



KELENGKAPAN

KARPET + PEMASANGAN

Bahan terbuat dari serabut plastik, tebal 4 mm Polypropylene, Lebar 4 meter dan panjang mengikuti ukuran ruangan
Lantai pada ruangan lab. dilapisi karpet



BOX STAGE MASTER dan BOX STAGE KABEL

Box Stage Master bahan multiplex dilapisi karpet, ukuran 240x180x20 cm
Box Stage Kabel bahan multiplex dilapisi karpet, ukuran 240x60x12 cm



Set Box TV Digital

Matrix - DVB-T2
- Menggunakan Antena UHF;
- Lebih peka terhadap sinyal dibanding mesin yg lain;
- Gambar dijamin bagus dan bening;
- 2 Output = HDMI dan RCA



LCD PROJECTOR 3600 Lumens

+ Wall Screen + Pasang Benq / Epson
Sistem Projector : DLP Technology
Resolusi Native : SVGA (800 x 600)
Brightness : 3600 Lumens
Rasio Kontras : 20,000:1
Rasio Aspek : 4:3
Tipe Lampu : 200W Rasio Besaran (Zoom) : 1.1:1
Kesesuaian Video : NTSC, PAL, SECAM
Daya / Power : AC100 to 240V, 50/60Hz
Dimensi (WxHxD)(mm): 296 x 120 x 221



INSTALASI KABEL AUDIO dan POWER

Kabel: LAN
Connector: Rj45, Kabel RCA, Kabel Listrik



ROOM SPEAKER

Speaker size: 8 inch (Three Way)
Power: 20.000 PMPO



INTERACTIVE FLAT PANEL 65inch

+ Floorstand Bracket

- OS Version : Android 11.0
- OPS : Chipset : Intel, CPU : Intel®Core i7 10th Generation
- Memory : 16GB
- HDD : 256 SSD
- Touch Point : 40-point touch; 40-point writing under Windows;
- 20-point writing under Android
- Built-in Document Camera : 13MP (4K) (At the bottom of the frame)
- Built-in AI Camera : 48MP (4K)



PENDINGIN RUANGAN (AC)

Cooling Capacity : 1.5 PK
Voltage : 200 - V/SHZ
Dimension : Indoor 810 x 220 x 151 mm
Outdoor 660 x 540 x 260 mm
Remote Control
24 Hour On/Off



INTERNET MODEM

Telkomsel - Ukuran modem 135x112,5x46 (mm)
- DL/ULCat 4; - 2x2MIMO LTE
- 2.4GHz WiFi; - 32User
- Up to 15 Mbps



EVALUATOR QUIZ

with Keyboard and LCD Display
Proses Instalasi sederhana, Dongle security, Klien Up to 50 channel
Kompatible dengan tipe Lab Bahasa Digital apapun, LCD Display,
Keyboard PS2/Keypad Numerik, Registrasi acak di klien manapun,
5 tombol digital quiz, Aplikasi Software mudah dan familiar
(standart office), Support Double Exam, Support import/export data
to excel, Modem wavecomm for SMS, Tampilan Grafik report, Tampilan Nilai Mean, Median
dan Modus, Detail history jawaban, Auto SMS report to client Manual SMS to client,
Pembuatan soal bisa dilakukan di Ms. Word



OPTIONAL

TIPE MTM DOUBLE CONSOLE LABORATORIUM BAHASA



MASTER SIDE

MASTER KONTROL

Pengendali utama sistem Lab Bahasa yang berbasis software komputer. Bisa dilengkapi dengan sistem touchscreen (optional).

SYSTEM CONTROL

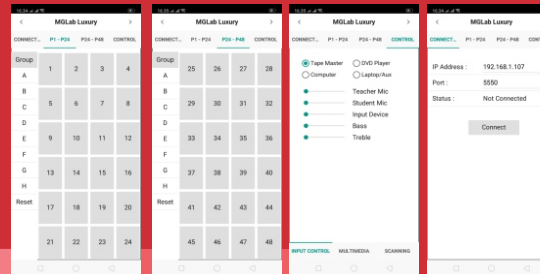
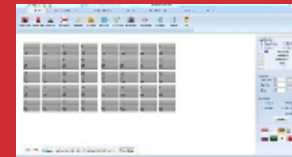
Micro Control System with internal memory, RS 232 Control
Digital Circuit Operating Voltage 5 VDC +/-3% TTL Level
Data Speed 19200 Kbps
High Power Amplifier
Tone Control DC Voltage
Pre Amplifier DC Voltage

Output Headset Earphone: 8-16Ω Output Room Speaker : 8Ω
Power Supply : 220/240V - 50Hz
Power Consumption : 300-400 Watt
Input : Headset 30-60Ω Master Tape, Computer, DVD, Audio Recorder, Auxiliary

Frequency Response : 100-10000 Hz S/N Ratio 50 dB

Maximum absolute ratings

- Operating Voltage 24 VDC (Audio Circuit)
6 VDC (Digital Circuit)
- Operating Temperature 85°C
- Stand by temperature 30°C



SOFTWARE CONTROL

- Listening function
- Intercom function
- Writing function with keyboard control (optional)
- Conversation
- Video Repeater
- Recording audio format mp3
- Visualized Attender names and layout
- Preprogrammable Seat Layout
- User Friendly Graphical User Interface
- Databased class, teacher, student as user entries
- Evaluator Quiz (optional)
- Keyboard Control
- Inzo Features
- Group Selector
- Autorun with Adjustable Delay
- Integrated on Android Device

KOMPUTER MASTER

Processor : Intel® Core™ i5-13400
Memory : 8GB DDR4 SDRAM
Storage : 512 GB SSD PCI Express
Operating System : Windows 11 Home 64-bit
Monitor LED 21.5
Keyboard USB
Mouse USB

Acer



MIC WIRELESS

Frequency Stabilization : <±30
Dynamic Range : >80dB
Total Harmonic Distortion : >0.5%
Frequency Response : 40Hz - 18KHz ±3dB
Signal-to-Noise Ratio : ≥ 100dB
Signal/Noise Ratio : >82dB

Shure / sejenis



HEADSET TEACHER

Mic : MGLab MG 888MV
Type : Condenser
Freq Response : 30 - 16.000 Hz
Impedance : 32Ω, Sensitivity : -58+/- -3dB
Earphone
Freq Response : 20 - 16.000 Hz
Impedance : 32Ω, Sensitivity : 105 dB/mW, Cable length : 1,5 m
Connector/plug : 3 pin



UPS 700 VA

APC
Capacity 700 VA;
360 watt;
50/60Hz +/- 1 Hz;



MEJA MASTER

Bahan : Particle Board 15mm dengan laminasi PVC Sheet warna Beach model U / Standart
Barang Buatan pabrik (knock down system)
Ukuran model U : 210 x 120 x 75 cm
Ukuran model Standart : 180 x 80 x 75 cm



ARION INDONESIA

www.arionindonesia.co.id
Jl. Lodan 129 Malang
info@arionindonesia.id

KURSI MASTER

Kursi dapat diputar, mempunyai sandaran lengan, tinggi dapat diatur.



AUDIO RECORDER

Support MP3, WMA, WAV; Support USB/SD memory; Recorder rate: highest bit rate for 192 Kbps, WAV format; LCD display, support multilateral languages, enter subdirectory, scan folders, display lyricsLine in record, the external audio source can be recorded into the SD card or U disk; Connect computer: USB sound card; Additional functions: calendar, clock, alarm clock, can by USB cable connect to computer to download SD card; IR remote control; Support Multilanguage, reach to 24 countries



MEJA SISWA (TWINBOOTH)

Model Twin Booth
Bahan: Particle Board 15mm dengan laminasi PVC Sheet warna Beech dengan kaca & nomor siswa di bagian depan
Ukuran: 123 x 118 x 54 cm
Barang buatan pabrik (Knock Down System)



HEADSET SISWA

MG 888MV

Mic

Type : Condenser
Freq Response : 30 - 16.000 Hz
Impedance : 32Ω
Sensitively : -58 +/- 3dB

Earphone

Freq Response : 20 - 16.000 Hz
Impedance : 32Ω
Sensitively : 1053m
Cable lenght : 1,5 m
Connector/plug : 3 pin



LCD PROJECTOR 3600 Lumens

+ Wall Screen + pasang Benq / Epson

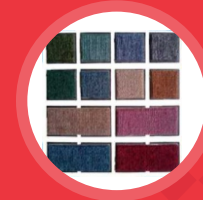
Sistem Projector : DLP Technology
Resolusi Native : SVGA (800 x 600)
Brightness : 3600 Lumens
Rasio Kontras : 20,000:1
Rasio Aspek : 4:3
Rasio Besar (Zoom) : 1.1:1
Tipe Lampu : 200W
Kesesuaian Video : NTSC, PAL, SECAM
Daya / Power : AC100 to 240V, 50/60Hz
Dimensi (WxHxD)(mm): 296 x 120 x 221



KARPET + PEMASANGAN

Jawa

Bahan terbuat dari serabut plastik, tebal 4mm Polypropylene, Lebar 4 meter dan panjang mengikuti ukuran ruangan lab & dilapisi karpet



STUDENT SIDE

STUDENT CONSOLE

MG LAB (Student Console)
Minimal memiliki fungsi utama sebagai berikut :
* Menggunakan lampu LED
* Record Out
* Fungsi memanggil/Call; siswa tinggal menekan tombol "Call" untuk menghubungi guru.



Spesifikasi

Frequency Response : 63-10.000Hz
S/N Ratio : > 50dB
Distortion : < 3%
Input Mic : - 60 dB
Intercom : - 15 dB, 5000
Headset : - 10 dB

STUDENT CHAIR

Bahan stainless steel, jenis lipat (Folding Chair)
Tinggi : 810 mm
Lebar : 375 mm,
Panjang : 395 mm



KELENGKAPAN

INSTALASI KABEL AUDIO dan POWER

Kabel : LAN
Connector : Rj45, Kabel RCA, Kabel Listrik



ROOM SPEAKER

Speaker Size : 8 inch (Three Way)
Power : 20.000 PMPO



Set Box TV Digital

Matrix - DVB-T2
- Menggunakan Antena UHF;
- Lebih peka terhadap sinyal dibanding mesin yg lain;
- Gambar dijamin bagus dan bening;
- 2 Output = HDMI dan RCA



BOX STAGE MASTER dan BOX STAGE KABEL

Box Stage Master bahan multiplex dilapisi karpet, ukuran 240x180x20 cm
Box Stage Kabel bahan multiplex dilapisi karpet, ukuran 240x60x12 cm



OPTIONAL

EVALUATOR QUIZ with Keyboard and LCD Display

Proses Instalasi sederhana, Dongle security, Klien Up to 50 channel, Kompatible dengan tipe Lab Bahasa Digital apapun, LCD Display, Keyboard PS2/Keypad Numerik, Registrasi acak di klien manapun, 5 tombol digital quiz, Aplikasi Software mudah dan familiar (standart office), Support Double Exam, Support import/export data to excel, Modem wavecomm for SMS, Tampilan Grafik report, Tampilan Nilai Mean, Median dan Modus, Detail history jawaban, Auto SMS report to client Manual SMS to client, Pembuatan soal bisa dilakukan di Ms. Word

